

Condo for sale 2 bedroom 90 m<sup>2</sup> in Center Point, Pattaya

**฿ 3,500,000**

**UNIT PARAMETERS:**

UID	FS-5744
quota	thai quota
type	2 bedroom
size	90m <sup>2</sup>
floor	5
view	city view
transfer cost	50/50

**PROJECT PARAMETERS:**

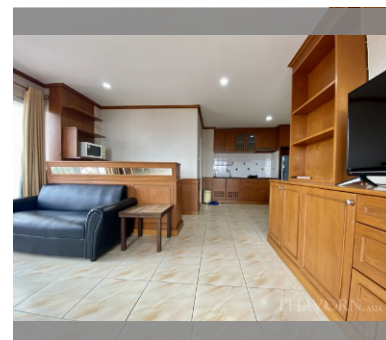
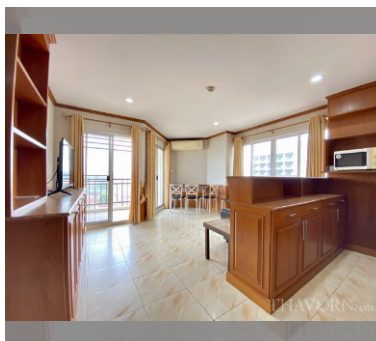
district	Central Pattaya
buildings	2
floors	7
built in	2008
maintenance	฿ 21,600/year

**FACILITIES:**

**General information:** resort, pets are allowed, open parking, covered parking.

**Swimming pool:** swimming pool, kids pool, pool bar .

**Other:** lobby, CCTV, security, minimart.



details

