

House For sale 4 bedroom 300 m<sup>2</sup> with land 624 m<sup>2</sup> in Central Park Hillside, Pattaya

Discover the epitome of luxurious living in the heart of Central Park Hillside, Pattaya. This stunning single-story house offers a spacious 300 m<sup>2</sup> of beautifully designed living space, nestled on a generous 624 m<sup>2</sup> plot. With three elegantly appointed bedrooms, this fully furnished home is perfect for those who appreciate both comfort and style. As you step inside, you'll be greeted by tastefully decorated interiors that seamlessly blend sophistication with homely warmth. The open-plan layout ensures plenty of natural light, creating an inviting atmosphere for both relaxation and entertaining. Situated in the sought-after area of Eastern Pattaya, this property offers not only a serene living environment but also convenient access to the vi...

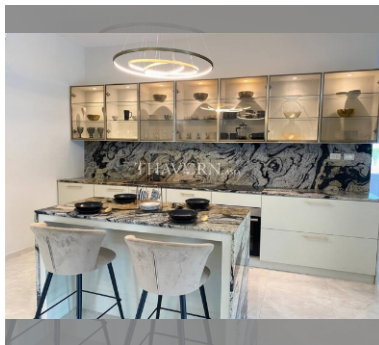
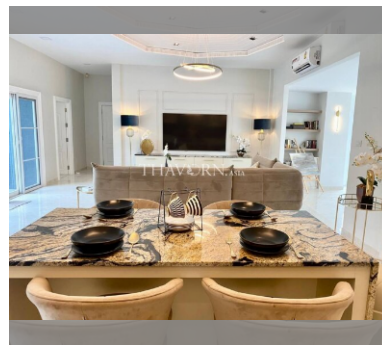
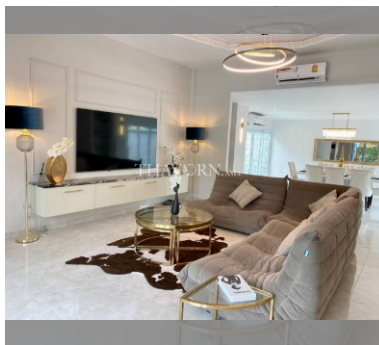
**฿ 16,900,000**

**UNIT PARAMETERS:**

UID	HS-4996
type	4 bedroom
size	300 m <sup>2</sup>
floors	1
quality	not chosen
transfer cost	
transfer fee payer	Seller 50/ Buyer 50
additional cost	

**VILLAGE PARAMETERS:**

district	East Pattaya
built in	2009



[details](#)

