

House For sale 2 bedroom 110 m² with land 224 m² in Central Park 4, Pattaya

Welcome to your dream home in the heart of Pattaya! Nestled in the serene Central Park 4 community, this charming 1-bedroom house offers a generous 110 m² of living space on a spacious 224 m² plot. Priced at just ฿4,300,000, this single-story gem is perfect for those seeking a peaceful retreat without sacrificing convenience. Imagine the possibilities as you step into this blank canvas, ready for you to infuse your personal style and make it truly your own. Whether you're looking to create a cozy sanctuary or a stylish modern abode, the unfurnished interior offers endless potential. Located in the desirable East Pattaya area, you'll enjoy the best of both worlds – a tranquil neighborhood atmosphere with easy access to the vibrant city lif...

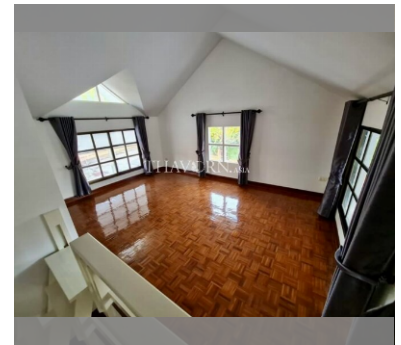
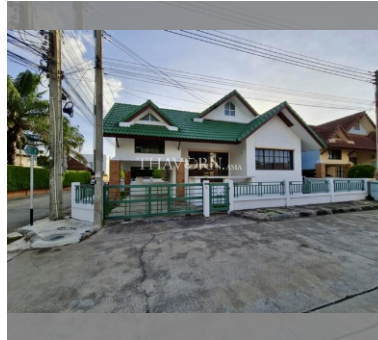
฿ 4,300,000

UNIT PARAMETERS:

| | |
|--------|--------------------|
| UID | HS-4963 |
| type | 2 bedroom |
| size | 110 m ² |
| floors | 1 |

VILLAGE PARAMETERS:

| | |
|----------|--------------|
| district | East Pattaya |
| built in | 2014 |



[details](#)

