

House For sale 3 bedroom 250 m<sup>2</sup> with land 270 m<sup>2</sup> in Adare Garden, Pattaya

Welcome to your dream home in the heart of Pattaya! Nestled in the charming Adare Garden community in the Jomtien district, this delightful house offers a perfect blend of comfort and style. Boasting 2 spacious bedrooms and a generous 250 m<sup>2</sup> of living space, this fully furnished gem is ready for you to move in and start making memories. The single-story layout ensures easy access and a cozy atmosphere for family living or entertaining friends. Set on a 270 m<sup>2</sup> plot, you'll have plenty of room to enjoy outdoor activities, gardening, or simply soaking up the tropical sunshine. Priced at an attractive 6,020,000, this property represents fantastic value for a home in such a desirable location. Don't miss out on this fantastic opportunity to ...

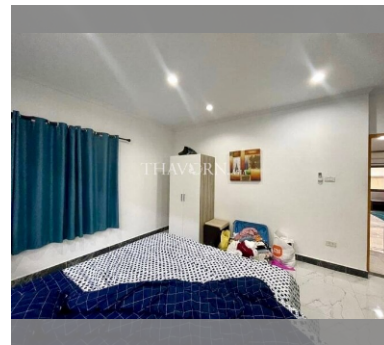
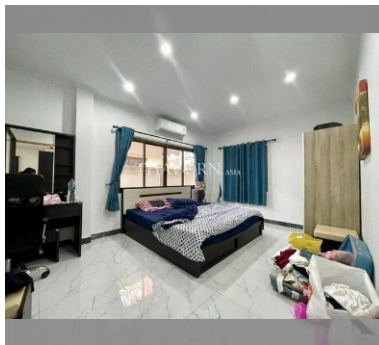
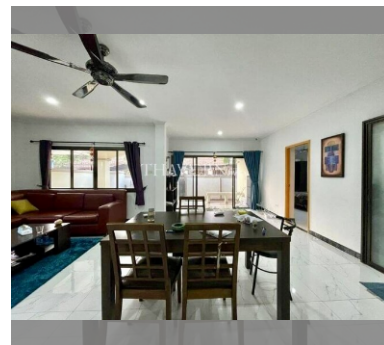
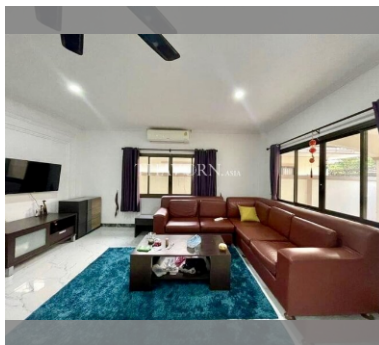
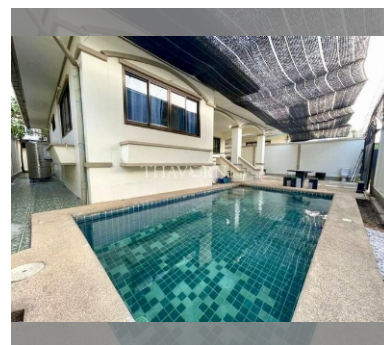
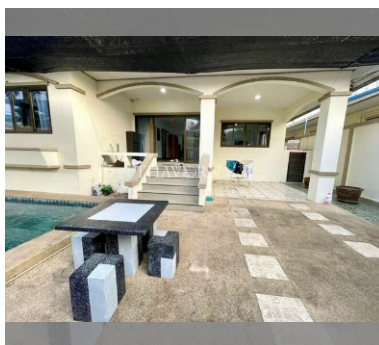
**฿ 6,020,000**

**UNIT PARAMETERS:**

UID	HS-4907
type	3 bedroom
size	250 m <sup>2</sup>
floors	1
view	city view

**VILLAGE PARAMETERS:**

district	Jomtien
floors	1
built in	2006



[details](#)

