

Condo for sale 1 bedroom 40 m<sup>2</sup> in Nam Talay Condominium, Pattaya

Discover the charm of coastal living with this delightful 1-bedroom apartment in the Nam Talay Condominium, Pattaya. Nestled in the serene Na Jomtien area, this cozy 40 m<sup>2</sup> flat offers the perfect blend of comfort and convenience. Priced at just 1,999,000, this fully furnished gem is situated on the top floor, offering stunning views from the 13th floor. Step inside to find a tastefully decorated living space, complete with all the furnishings you need to feel right at home. Whether you're looking for a personal retreat or a smart investment, this property, under company ownership, ticks all the boxes. Don't miss out on this fantastic opportunity to own a piece of paradise in one of Pattaya's most sought-after locations. Embrace the lifes...

## ฿ 1,999,000

### UNIT PARAMETERS:

UID	FS-98420
quota	company ownership
type	1 bedroom
size	40m <sup>2</sup>
floor	13
view	partial sea view
quality	not chosen
transfer cost	
transfer fee payer	
additional cost	

### PROJECT PARAMETERS:

district	Na Jomtien
buildings	1
floors	13
built in	2014

### FACILITIES:

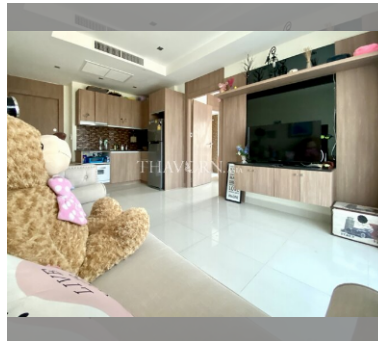
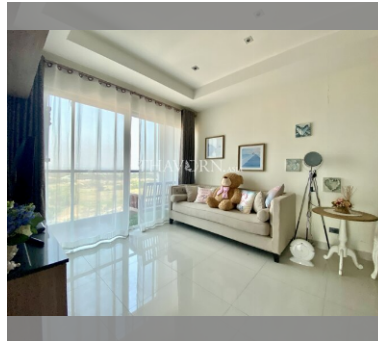
**General information:** resort, meters to beach: 50, minutes to beach: 2, open parking.

**Swimming pool:** swimming pool, kids pool, jacuzzi.

**Chill zone:** garden, rooftop chillout.

**Health zone:** gym, massage.

**Other:** reception, lobby, CCTV, security, minimart, laundry, room service.



details

