

Condo for sale studio 42 m² in Park Royal, Pattaya

Beautiful and spacious studio with a good view. The condo is located in a quiet location, which is suitable for a comfortable stay. The apartment is sold with all the furniture as shown in the photos. Within walking distance from the park, just 300 meters. ·Park Royal 1 ·Type: Studio ·Size: 42 sqm ·Floor: 6 ·View: City view ·Location: Pratumnak ·Transfer: 50/50 ·ID: 63 ·฿ 500 000

฿ 2,500,000

UNIT PARAMETERS:

UID	FS-5646
quota	foreign quota
type	studio
size	42m ²
floor	6
view	garden view
transfer fee payer	seller and buyer 50/50
exclusive	on

PROJECT PARAMETERS:

district	Pratumnak
buildings	1
floors	8
built in	2009
maintenance	฿ 20,160/year

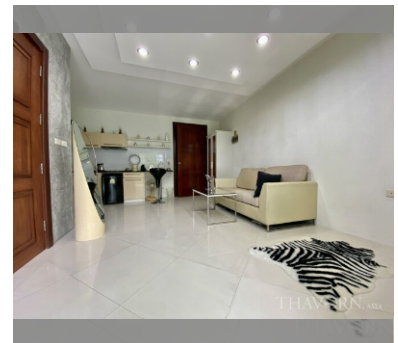
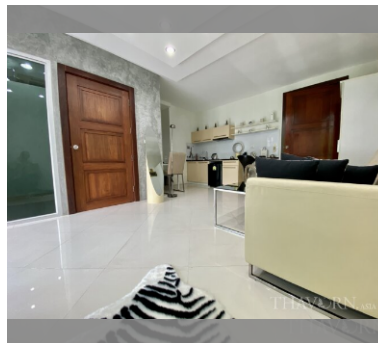
FACILITIES:

General information: boutique, covered parking.

Swimming pool: rooftop pool, infinity view.

Chill zone: chill zone, rooftop chillout.

Other: reception, CCTV, security.



[details](#)

