

Condo for sale 1 bedroom 54 m² in Water's Edge, Pattaya

Discover your dream home in the heart of Pattaya with this stunning 1-bedroom apartment located in the prestigious Water's Edge condominium. Nestled in the serene Na Jomtien area, this fully furnished gem offers a spacious 54 square meters of modern living space, perfect for those seeking comfort and style. Perched on the 3rd floor of an 8-story building, this apartment boasts a contemporary design and is ready for you to move in. Imagine waking up to the tranquil surroundings and enjoying your morning coffee while taking in the fresh sea breeze. Priced at 3,700,000, this property presents an excellent opportunity for foreign ownership, making it an ideal investment or a perfect getaway home. Whether you're looking to settle down or seek...

฿ 3,700,000

UNIT PARAMETERS:

UID	FS-27902
quota	foreign quota
type	1 bedroom
size	54m ²
floor	3
view	sea view
quality	not chosen
transfer cost	
transfer fee payer	Seller and Buyer 50/50
additional cost	

PROJECT PARAMETERS:

district	Na Jomtien
buildings	1
floors	8
built in	2014
maintenance	฿ 32,400/year

FACILITIES:

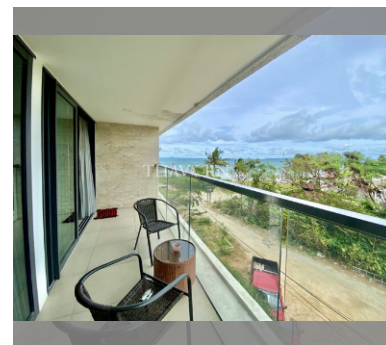
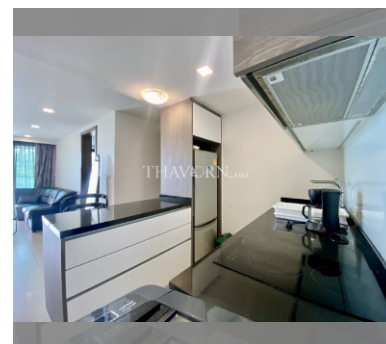
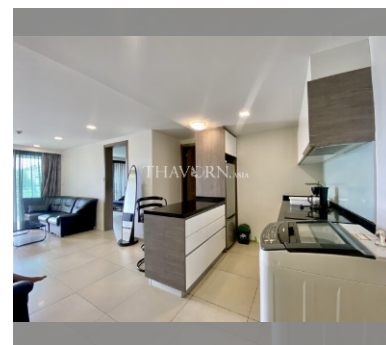
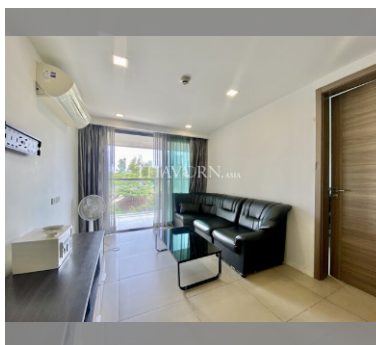
General information: boutique, underground parking, open parking.

Swimming pool: swimming pool.

Chill zone: chill zone.

Health zone: gym.

Other: CCTV, security, minimart.



details

