

Condo for sale studio 35 m² in Water's Edge, Pattaya

Discover your perfect getaway in the heart of Pattaya with this charming studio apartment located in the prestigious Water's Edge condominium. Nestled in the serene district of Na Jomtien, this fully furnished 35-square-meter gem offers an ideal blend of comfort and convenience. Perched on the third floor of an eight-story building, this cozy studio is designed to meet all your needs. With complete furnishings, you can move in and start enjoying your new home right away. Whether you're looking for a permanent residence or a vacation retreat, this property offers the flexibility and ease you desire. Priced at an attractive 2,350,000, this apartment is available under a foreign quota, making it an excellent opportunity for international bu...

฿ 2,350,000

UNIT PARAMETERS:

UID	FS-27901
quota	foreign quota
type	studio
size	35m ²
floor	3
view	sea view
quality	not chosen
transfer cost	
transfer fee payer	On buyer
additional cost	

PROJECT PARAMETERS:

district	Na Jomtien
buildings	1
floors	8
built in	2014
maintenance	฿ 21,000/year

FACILITIES:

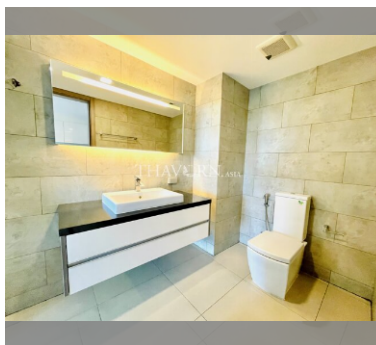
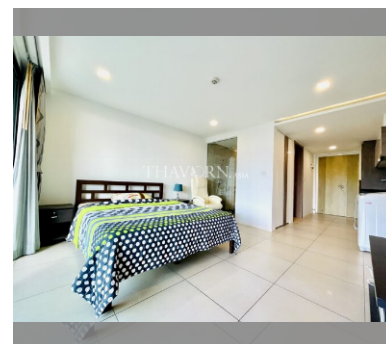
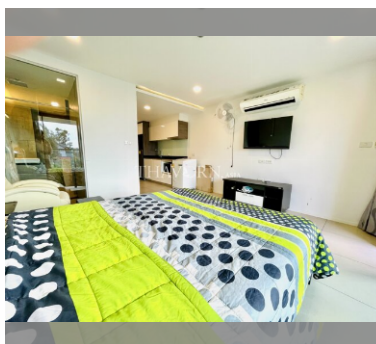
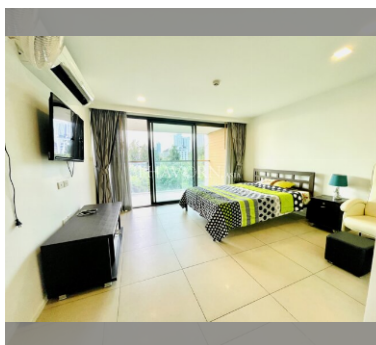
General information: boutique, underground parking, open parking.

Swimming pool: swimming pool.

Chill zone: chill zone.

Health zone: gym.

Other: CCTV, security, minimart.



details

