

Condo for sale 1 bedroom 91 m² in Emerald Palace, Pattaya

Discover your dream home in the heart of Pattaya! This stunning 1-bedroom condo in the prestigious Emerald Palace is a true gem. With a spacious 92 m² layout, you'll have plenty of room to relax and unwind. Located in the desirable Pratumnak area, this fully furnished condo is ready for you to move in and start enjoying the vibrant lifestyle Pattaya has to offer. Situated on the 4th floor of a 7-story building, this property offers a perfect blend of comfort and convenience. The condo is available under a foreign quota, making it an excellent investment opportunity for international buyers. Priced at an attractive 3,830,000, this is your chance to own a piece of paradise in one of Pattaya's most sought-after residences. Don't miss out on...

฿ 4,050,000

UNIT PARAMETERS:

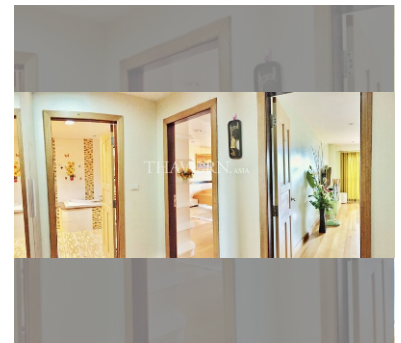
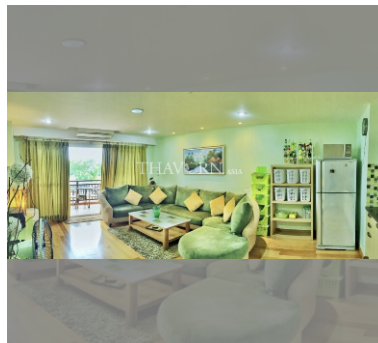
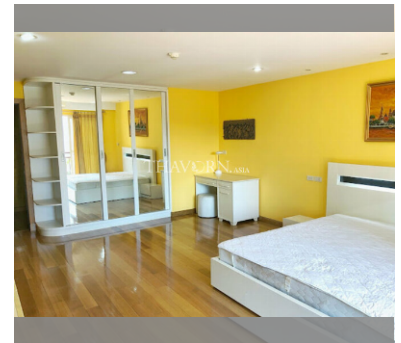
UID	FS-27699
quota	foreign quota
type	1 bedroom
size	91m ²
floor	4
view	pool view
quality	not chosen
transfer cost	
transfer fee payer	50/50
additional cost	

PROJECT PARAMETERS:

district	Pratumnak
buildings	1
floors	7
built in	2010

FACILITIES:

- General information: boutique, underground parking, open parking.
- Swimming pool: swimming pool.
- Chill zone: chill zone, garden.
- Health zone: gym, sauna.
- Other: lobby, CCTV, security.



details

