

## Condo for sale 1 bedroom 34 m<sup>2</sup> in Pristine Park 3, Pattaya

**฿ 2,840,000**

**UNIT PARAMETERS:**

UID	FS-242953
quota	foreign quota
type	1 bedroom
size	34m <sup>2</sup>
floor	6
view	garden view

**PROJECT PARAMETERS:**

district	Jomtien
buildings	6
floors	8
built in	2027
maintenance	฿ 16,320/year

**FACILITIES:**

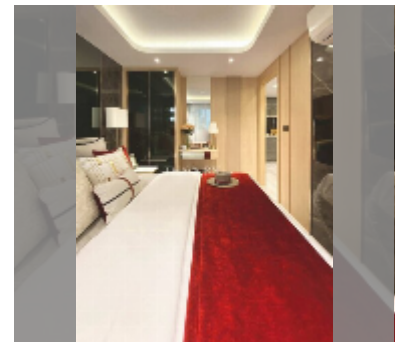
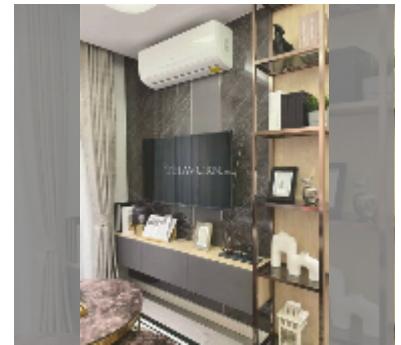
**General information:** resort, meters to beach: 1800, shuttle bus, underground parking.

**Swimming pool:** swimming pool, kids pool, jacuzzi.

**Chill zone:** chill zone, garden.

**Health zone:** gym, sauna.

**Other:** reception, lobby, kids playgarden, CCTV, security, minimart, golf.



[details](#)

