

## Condo for sale 1 bedroom 24.87 m<sup>2</sup> in The Twin Tower Jomtien, Pattaya

**฿ 1,850,000**

### UNIT PARAMETERS:

UID	FS-242723
quota	thai quota
type	1 bedroom
size	24.87m <sup>2</sup>
floor	28
view	partial sea view
quality	excellent
equipment: furniture	

### PROJECT PARAMETERS:

district	Jomtien
buildings	2
floors	31
built in	2015
maintenance	฿ 7,461/year

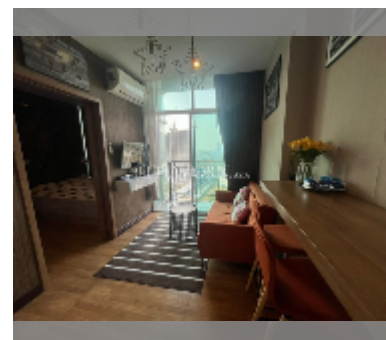
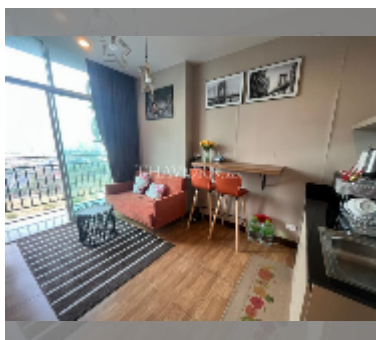
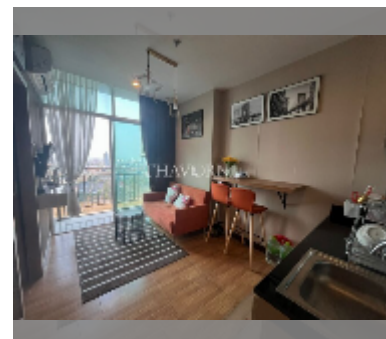
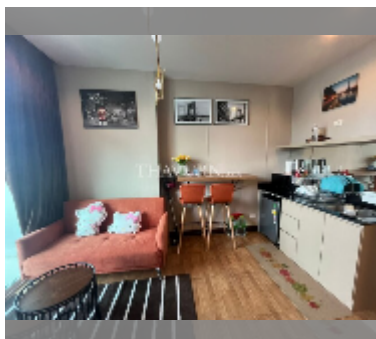
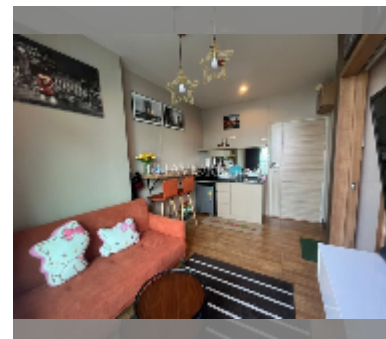
### FACILITIES:

General information: highrise, meters to beach: 500, open parking, covered parking.

Swimming pool: swimming pool.

Health zone: gym.

Other: reception, lobby, CCTV, security, laundry.



details

