

## Condo for sale 2 bedroom 40 m<sup>2</sup> in The Twin Tower Jomtien, Pattaya

**฿ 4,900,000**

**UNIT PARAMETERS:**

UID	FS-242608
quota	foreign quota
type	2 bedroom
size	40m <sup>2</sup>
floor	29
view	partial sea view
quality	good

equipment: furniture, household appliances, air conditioner, internet, television, refrigerator

**PROJECT PARAMETERS:**

district	Jomtien
buildings	2
floors	31
built in	2015
maintenance	฿ 12,000/year

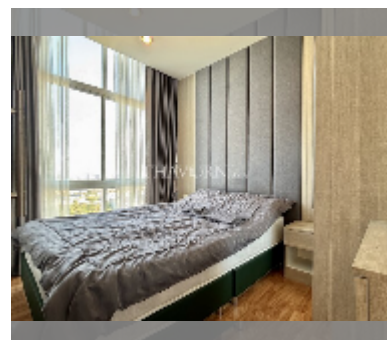
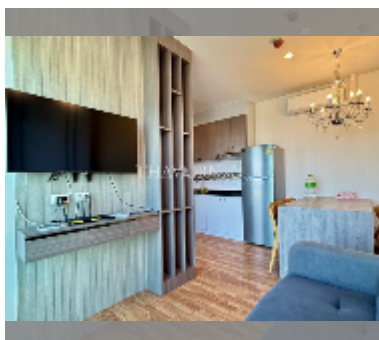
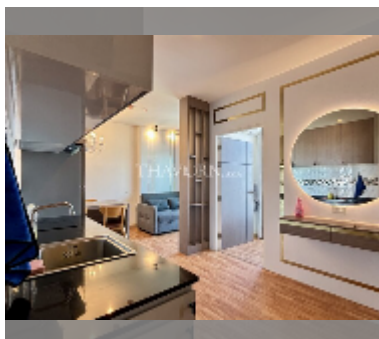
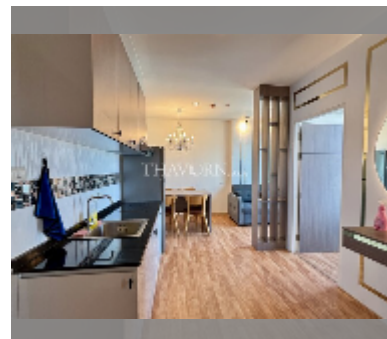
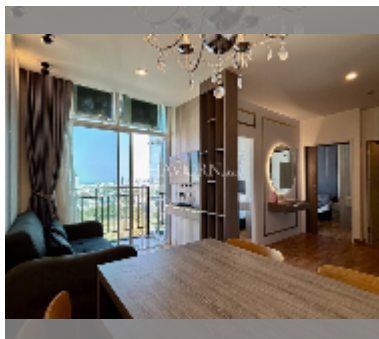
**FACILITIES:**

General information: highrise, meters to beach: 500, open parking, covered parking.

Swimming pool: swimming pool.

Health zone: gym.

Other: reception, lobby, CCTV, security, laundry.



[details](#)

