

Condo for sale 1 bedroom 26 m² in The Twin Tower Jomtien, Pattaya

฿ 1,840,000

UNIT PARAMETERS:

UID	FS-242178
quota	thai quota
type	1 bedroom
size	26m ²
floor	17
view	sea view
quality	good
equipment: furniture, air conditioner, refrigerator	

PROJECT PARAMETERS:

district	Jomtien
buildings	2
floors	31
built in	2015
maintenance	฿ 7,800/year

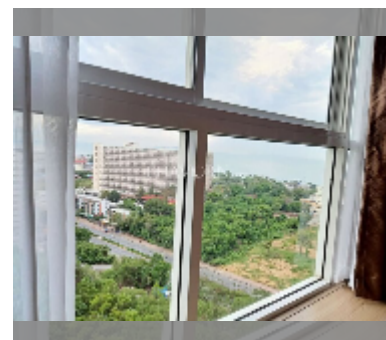
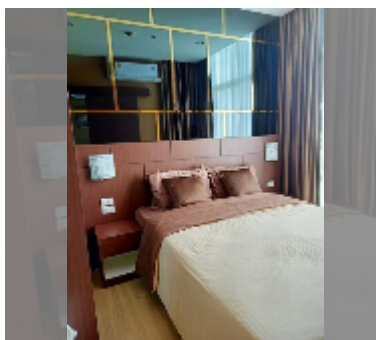
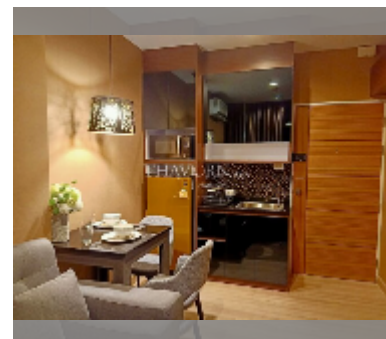
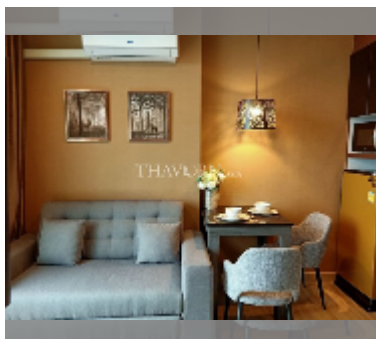
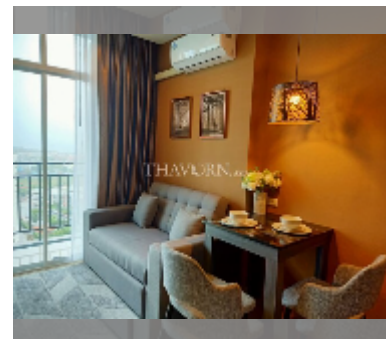
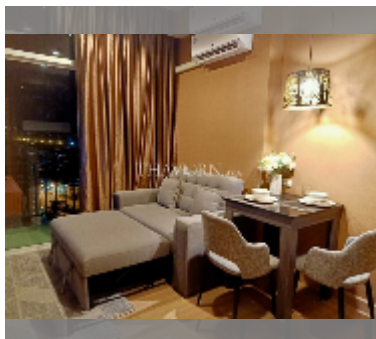
FACILITIES:

General information: highrise, meters to beach: 500, open parking, covered parking.

Swimming pool: swimming pool.

Health zone: gym.

Other: reception, lobby, CCTV, security, laundry.



[details](#)

