

Condo for sale studio 29 m<sup>2</sup> in PTY Residence Sai 1, Pattaya

**฿ 5,990,000**

#### UNIT PARAMETERS:

UID	FS-242047
quota	thai quota
type	studio
size	29m <sup>2</sup>
floor	12
view	city view
quality	not chosen
off-plan resale	on

#### PROJECT PARAMETERS:

district	Central Pattaya
buildings	1
floors	27
start of construction	2025
built in	2027

#### FACILITIES:

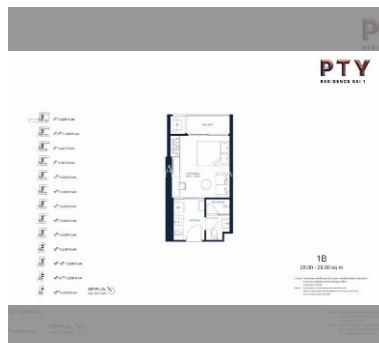
**General information:** highrise, meters to beach: 20, minutes to beach: 1, beach front, multy-level parking.

**Swimming pool:** swimming pool, kids pool, rooftop pool, infinity view, sunbathing area.

**Chill zone:** chill zone, garden, rooftop chillout, barbeque areas.

**Health zone:** gym, sauna, hamam, steam, yoga room.

**Other:** reception, lobby, clubhouse, meeting room, games room, CCTV, security, laundry.



details

