

## Condo for sale 1 bedroom 36 m<sup>2</sup> in Park Lane Jomtien Resort, Pattaya

**฿ 1,450,000**

**UNIT PARAMETERS:**

UID	FS-241989
quota	company ownership
type	1 bedroom
size	36m <sup>2</sup>
floor	8
view	city view
quality	good
equipment: furniture, air conditioner, television, refrigerator	

**PROJECT PARAMETERS:**

district	Jomtien
buildings	4
floors	8
built in	2010

**FACILITIES:**

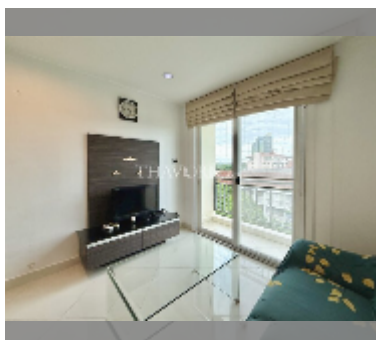
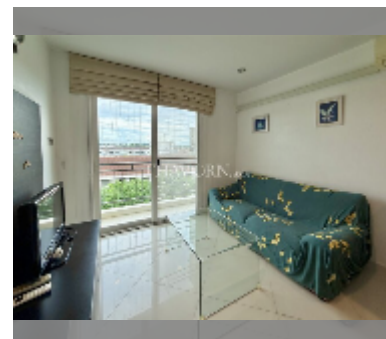
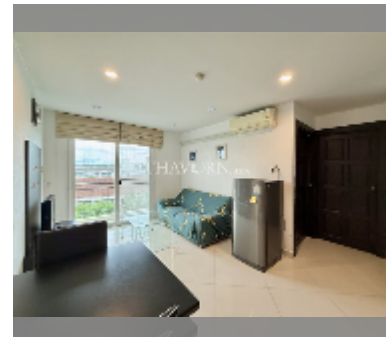
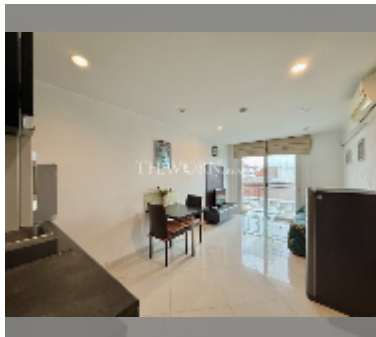
**General information:** resort, meters to beach: 500, minutes to beach: 10, open parking.

**Swimming pool:** swimming pool, kids pool, jacuzzi.

**Chill zone:** chill zone, garden.

**Health zone:** gym.

**Other:** CCTV, security, minimart.



details

