

## Condo for sale 1 bedroom 36 m<sup>2</sup> in Park Lane Jomtien Resort, Pattaya

**฿ 1,800,000**

### UNIT PARAMETERS:

UID	FS-241583
quota	foreign quota
type	1 bedroom
size	36m <sup>2</sup>
floor	3
view	city view

### PROJECT PARAMETERS:

district	Jomtien
buildings	4
floors	8
built in	2010

### FACILITIES:

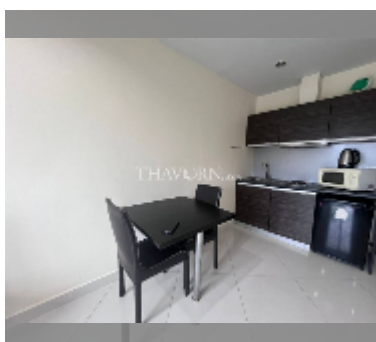
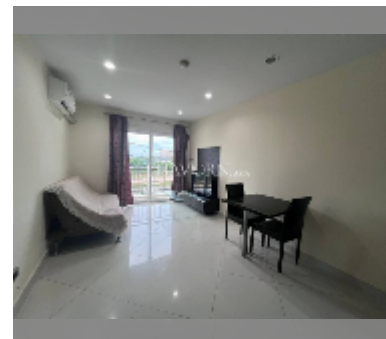
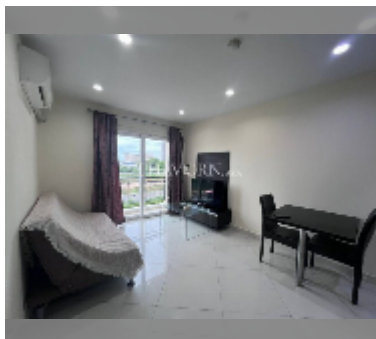
**General information:** resort, meters to beach: 500, minutes to beach: 10, open parking.

**Swimming pool:** swimming pool, kids pool, jacuzzi.

**Chill zone:** chill zone, garden.

**Health zone:** gym.

**Other:** CCTV, security, minimart.



[details](#)

