

Condo for sale studio 25 m<sup>2</sup> in Pristine Park 3, Pattaya

**฿ 1,740,000**

**UNIT PARAMETERS:**

UID	FS-241278
quota	foreign quota
type	studio
size	25m <sup>2</sup>
floor	4
view	city view
quality	not chosen
transfer fee payer	By buyer

**PROJECT PARAMETERS:**

district	Jomtien
buildings	6
floors	8
built in	2027
maintenance	฿ 12,000/year

**FACILITIES:**

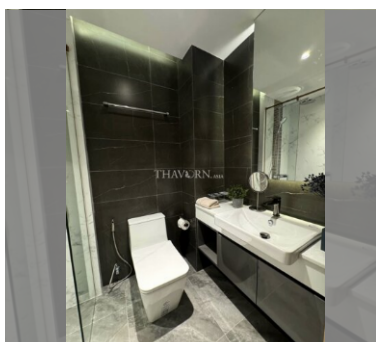
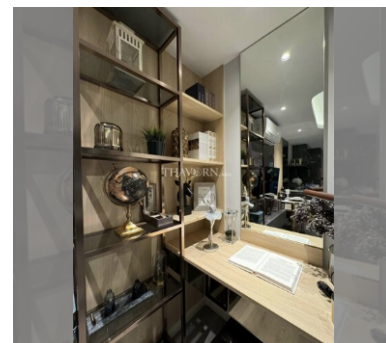
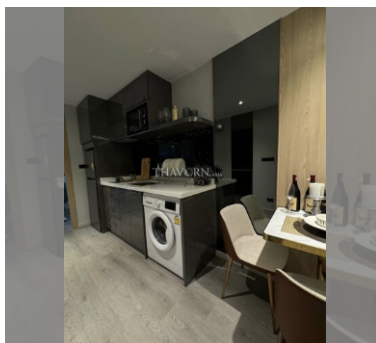
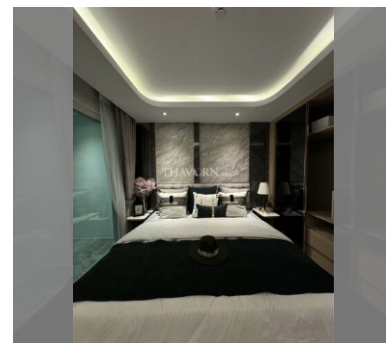
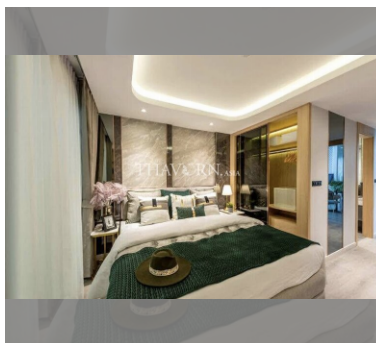
**General information:** resort, meters to beach: 1800, shuttle bus, underground parking.

**Swimming pool:** swimming pool, kids pool, jacuzzi.

**Chill zone:** chill zone, garden.

**Health zone:** gym, sauna.

**Other:** reception, lobby, kids playgarden, CCTV, security, minimart, golf.



details

