

## Condo for sale 1 bedroom 43.5 m<sup>2</sup> in Grand Solaire Noble, Pattaya

**฿ 6,800,000**

### UNIT PARAMETERS:

UID	FS-241036
quota	foreign quota
type	1 bedroom
size	43.5m <sup>2</sup>
floor	25
view	sea view

### PROJECT PARAMETERS:

district	Central Pattaya
buildings	1
floors	50
start of construction	2025
built in	2028

### FACILITIES:

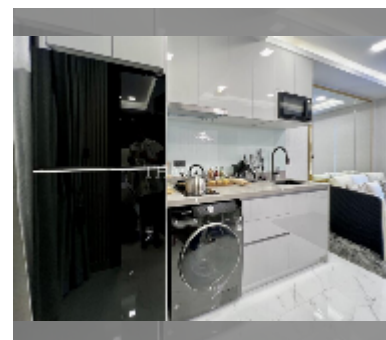
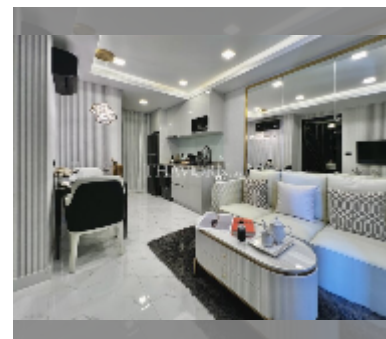
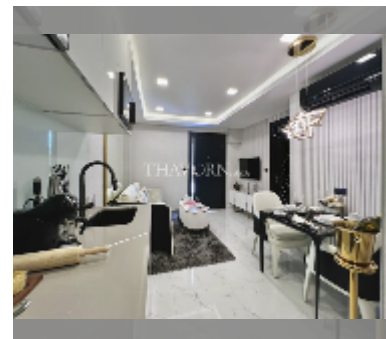
**General information:** highrise, meters to beach: 800, minutes to beach: 10, shuttle bus, underground parking, multy-level parking.

**Swimming pool:** swimming pool, kids pool, infinity view, jacuzzi, pool bar , sunbathing area.

**Chill zone:** chill zone, garden, rooftop chillout.

**Health zone:** gym, sauna, hamam.

**Other:** reception, lobby, clubhouse, meeting room, kids playgarden, CCTV, security, minimart, room service.



[details](#)

