

Condo for sale 1 bedroom 36 m<sup>2</sup> in Park Lane Jomtien Resort, Pattaya

# ฿ 1,390,000

## UNIT PARAMETERS:

UID	FS-240878
quota	company ownership
type	1 bedroom
size	36m <sup>2</sup>
floor	5
view	pool view
quality	excellent
equipment	furniture, air conditioner, television
online viewing	on
transfer fee payer	on buyer
Coagent Listing	on
Can top-up	on

## PROJECT PARAMETERS:

district	Jomtien
buildings	4
floors	8
built in	2010

## FACILITIES:

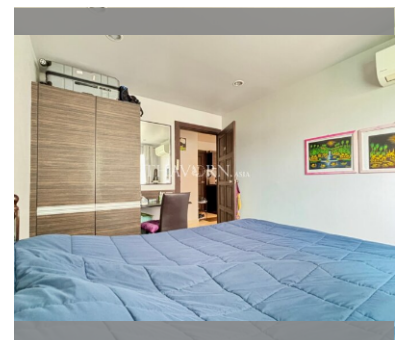
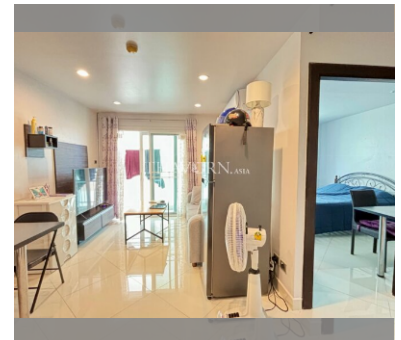
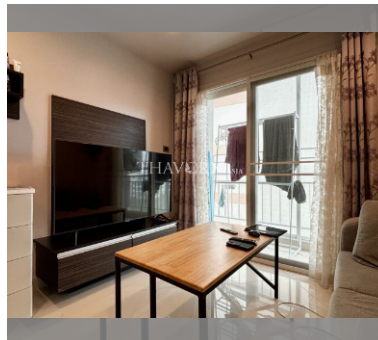
**General information:** resort, meters to beach: 500, minutes to beach: 10, open parking.

**Swimming pool:** swimming pool, kids pool, jacuzzi.

**Chill zone:** chill zone, garden.

**Health zone:** gym.

**Other:** CCTV, security, minimart.



details

