

Condo for sale 2 bedroom 60 m² in New Nordic Club 1, Pattaya

Welcome to your dream home in the heart of Pattaya! Nestled within the prestigious New Nordic Club 1, this charming 2-bedroom apartment offers the perfect blend of comfort and modern living. Spanning 60 square meters, this fully furnished gem is situated on the 5th floor of a 7-story building, providing you with a cozy yet spacious retreat. Imagine waking up to the vibrant energy of Pattaya's Pratumnak district, where the lively city atmosphere meets serene coastal vibes. With a price tag of just 2,999,000, this property is an exceptional find for those looking to invest in a prime location or settle into a new lifestyle. The apartment is part of the Thai quota, ensuring a smooth ownership process. Whether you're looking for a permanent ...

฿ 2,999,000

UNIT PARAMETERS:

UID	FS-240491
quota	company ownership
type	2 bedroom
size	60m ²
floor	5
view	city view
quality	not chosen
transfer cost	
transfer fee payer	Company
additional cost	

PROJECT PARAMETERS:

district	Pratumnak
buildings	1
floors	7
built in	2016

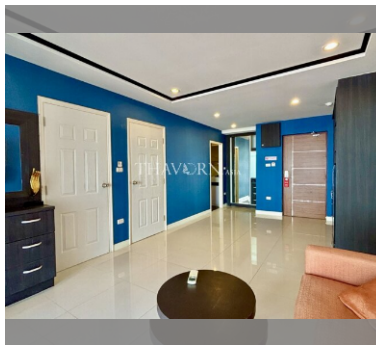
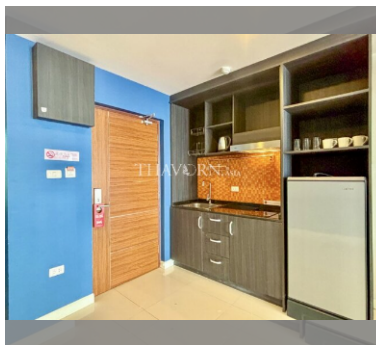
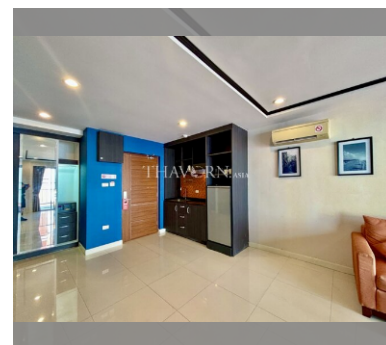
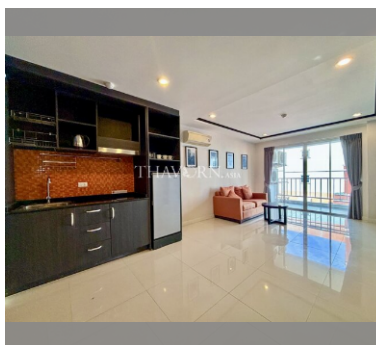
FACILITIES:

General information: lowrise, open parking, covered parking.

Swimming pool: swimming pool.

Health zone: gym.

Other: reception, CCTV, security.



details

