

Condo for sale 2 bedroom 72 m<sup>2</sup> in Paradise Park, Pattaya

Welcome to your dream retreat in the heart of Pattaya! This stunning 2-bedroom apartment, nestled within the renowned Paradise Park complex, offers the perfect blend of comfort and style. Spanning a generous 72 square meters, this fully furnished gem is ready for you to move in and start enjoying the vibrant lifestyle of the Jomtien area. Located on the 5th floor of an 8-story building, this apartment provides a serene escape with picturesque views. The open and airy layout is designed to maximize space, allowing for both relaxation and entertainment. Each room is thoughtfully furnished, ensuring a seamless transition into your new home. Paradise Park is more than just a residence; it's a community. You'll have access to a range of amenit...

## ฿ 3,890,000

### UNIT PARAMETERS:

UID	FS-240488
quota	foreign quota
type	2 bedroom
size	72m <sup>2</sup>
floor	5
view	pool view
quality	not chosen
transfer cost	
transfer fee payer	Seller 50/ Buyer 50
additional cost	

### PROJECT PARAMETERS:

district	Jomtien
buildings	3
floors	8
built in	2012
maintenance	฿ 30,240/year

### FACILITIES:

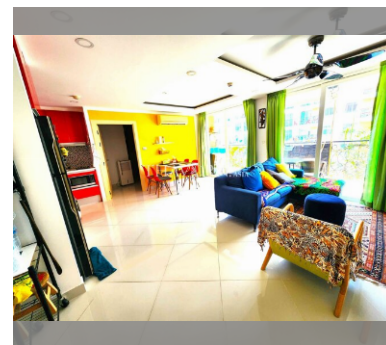
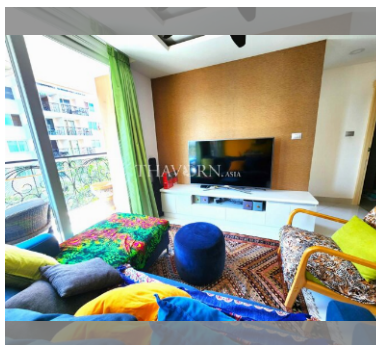
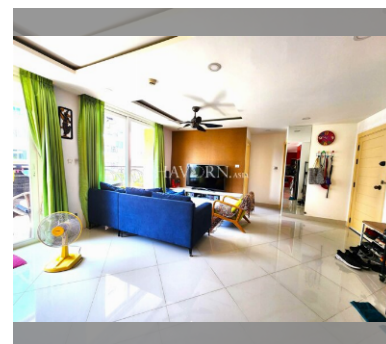
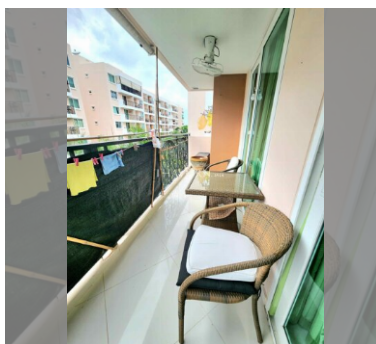
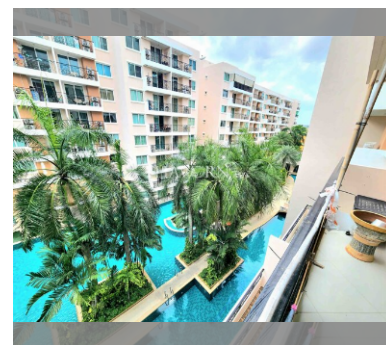
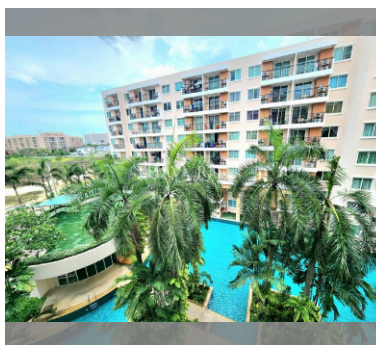
General information: resort, underground parking.

Swimming pool: swimming pool, kids pool.

Chill zone: chill zone, garden.

Health zone: gym.

Other: lobby, kids playgarden, CCTV, security, minimart.



details

