

Condo for sale studio 32 m² in View Talay 1, Pattaya

Welcome to your dream studio apartment at View Talay 1, located in the vibrant city of Pattaya, in the desirable Pratumnak area. This charming 32 m² flat is perched on the 13th floor of a 15-story building, offering you stunning views and a serene living environment. Step inside to find a fully furnished space that is ready for you to move in and make your own. Every detail has been thoughtfully considered to provide comfort and convenience, making it an ideal choice for those looking to enjoy Pattaya's lively atmosphere without compromising on tranquility. Priced at just 1,300,000, this property offers incredible value, especially given its location and amenities. Plus, with foreign ownership available, it's a fantastic opportunity for...

฿ 1,300,000

UNIT PARAMETERS:

UID	FS-240469
quota	foreign quota
type	studio
size	32m ²
floor	13
view	partial sea view
quality	not chosen
transfer cost	
transfer fee payer	Seller 50/ Buyer 50
additional cost	

PROJECT PARAMETERS:

district	Pratumnak
buildings	2
floors	15
built in	1997
maintenance	฿ 7,680/year

FACILITIES:

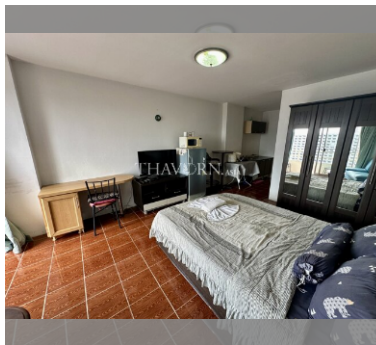
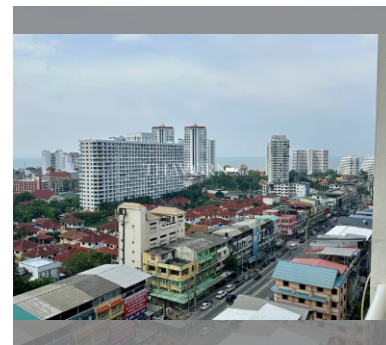
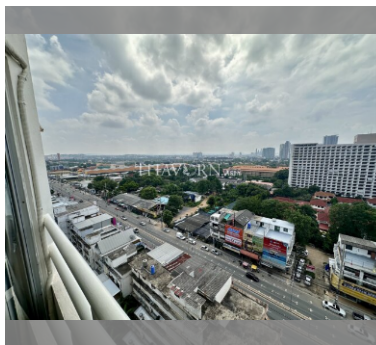
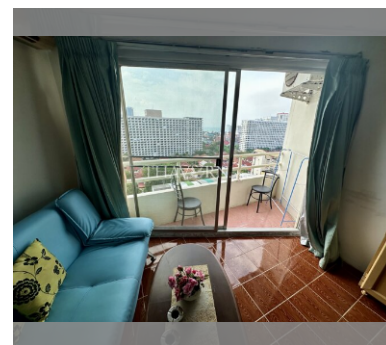
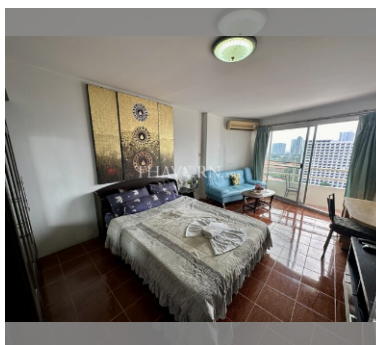
General information: highrise, meters to beach: 600, minutes to beach: 10, open parking.

Swimming pool: swimming pool, kids pool.

Chill zone: garden.

Health zone: massage.

Other: lobby, CCTV, security, minimart, laundry, room service.



details

