

Condo for sale studio 32 m² in View Talay 1, Pattaya

Welcome to your dream escape in the heart of Pattaya! This charming studio apartment offers 32 square meters of beautifully designed living space in the prestigious View Talay 1 complex. Nestled in the vibrant Pratumnak area, this fully furnished gem is perfect for those seeking comfort and convenience. Situated on the 2nd floor of a 15-story building, this cozy flat is ideal for anyone looking to enjoy the vibrant lifestyle of Pattaya. With a price tag of just 1,100,000, it presents an incredible opportunity for foreign ownership within a sought-after community. Step inside to discover a well-appointed interior that maximizes space and style. Whether you're looking for a personal retreat or a smart investment, this studio apartment tick...

฿ 1,100,000

UNIT PARAMETERS:

UID	FS-240468
quota	foreign quota
type	studio
size	32m ²
floor	2
view	city view
quality	not chosen
transfer cost	
transfer fee payer	Seller 50/ Buyer 50
additional cost	

PROJECT PARAMETERS:

district	Pratumnak
buildings	2
floors	15
built in	1997
maintenance	฿ 7,680/year

FACILITIES:

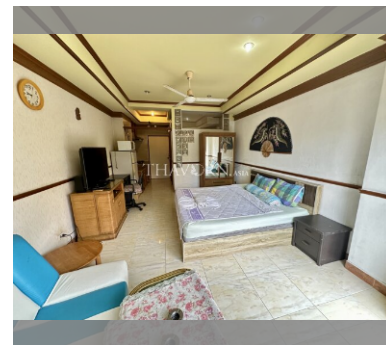
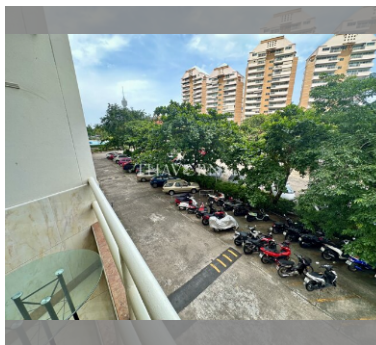
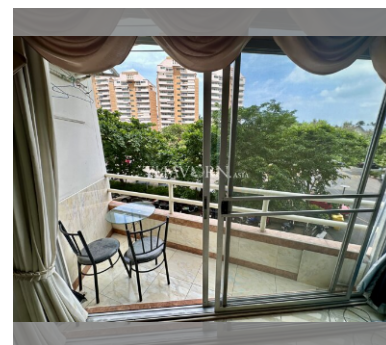
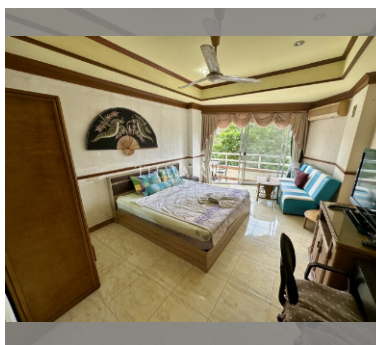
General information: highrise, meters to beach: 600, minutes to beach: 10, open parking.

Swimming pool: swimming pool, kids pool.

Chill zone: garden.

Health zone: massage.

Other: lobby, CCTV, security, minimart, laundry, room service.



details

