

Condo for sale 1 bedroom 48 m<sup>2</sup> in Aeras, Pattaya

Welcome to your dream home in the sky! This stunning one-bedroom apartment, located on the 21st floor of the prestigious Aeras Condominium in Pattaya, offers breathtaking views and a lifestyle of luxury. With a generous 48 square meters of living space, this fully furnished flat is perfect for those seeking comfort and style. Nestled in the vibrant district of Jomtien, you'll find yourself surrounded by a blend of tranquility and excitement. Whether you're sipping your morning coffee while enjoying the panoramic views or exploring the lively local scene, this location has it all. Priced at 5,800,000, this property is a fantastic investment in one of Pattaya's most sought-after areas. With Thai quota ownership, it provides an excellent op...

## ฿ 5,800,000

### UNIT PARAMETERS:

UID	FS-240459
quota	thai quota
type	1 bedroom
size	48m <sup>2</sup>
floor	21
view	garden view
quality	not chosen
transfer cost	
transfer fee payer	By seller
additional cost	

### PROJECT PARAMETERS:

district	Jomtien
buildings	2
floors	38
built in	2017
maintenance	฿ 23,040/year

### FACILITIES:

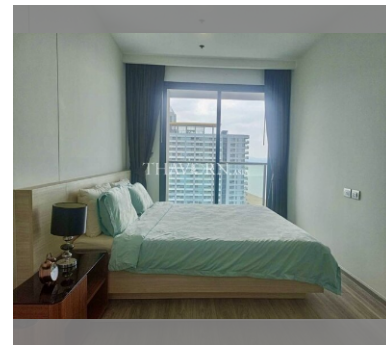
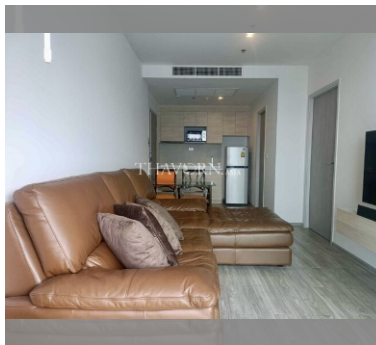
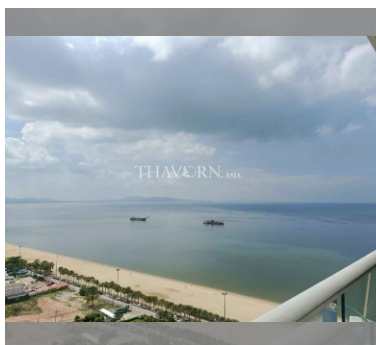
**General information:** highrise, underground parking.

**Swimming pool:** swimming pool, rooftop pool.

**Chill zone:** chill zone, garden, rooftop chillout.

**Health zone:** gym.

**Other:** lobby, clubhouse, games room, kids playgarden, CCTV, security, minimart.



details

