

Condo for sale 1 bedroom 28 m² in City Garden Olympus, Pattaya

Welcome to your new oasis in the heart of Pattaya! Discover the charm of this fully furnished 1-bedroom apartment nestled in the prestigious City Garden Olympus complex. With a cozy 28 square meters of living space, this delightful flat offers everything you need for a comfortable lifestyle. Situated on the 4th floor of an 8-story building, this apartment provides a perfect blend of convenience and tranquility. Enjoy the vibrant energy of Central Pattaya, with its bustling streets and exciting attractions just moments away. Priced at 2,580,000, this property is an excellent investment opportunity, especially with the foreign ownership quota available. Whether you're looking for a new home or a smart investment, this apartment is an ideal...

฿ 2,580,000

UNIT PARAMETERS:

UID	FS-240458
quota	foreign quota
type	1 bedroom
size	28m ²
floor	4
view	pool view
quality	not chosen
transfer cost	
transfer fee payer	Seller 50/ Buyer 50
additional cost	

PROJECT PARAMETERS:

district	Central Pattaya
buildings	6
floors	8
built in	2018
maintenance	฿ 13,440/year

FACILITIES:

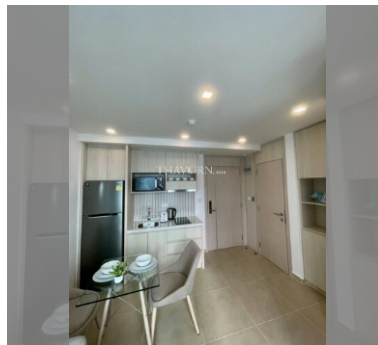
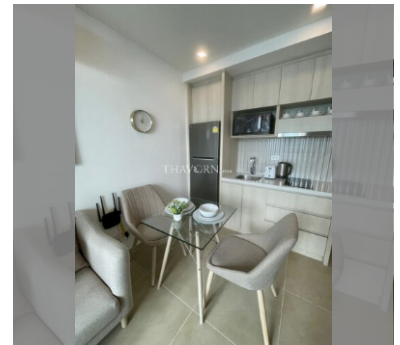
General information: resort, underground parking.

Swimming pool: swimming pool, kids pool, jacuzzi, pool bar .

Chill zone: chill zone, rooftop chillout.

Health zone: gym, sauna.

Other: lobby, CCTV, security, minimart.



details

