

Condo for sale 1 bedroom 34 m² in Copacabana Coral Reef, Pattaya

Welcome to your dream getaway in the heart of Pattaya! Nestled within the prestigious Copacabana Coral Reef, this stunning 1-bedroom apartment offers a luxurious lifestyle with breathtaking views from the 38th floor of a magnificent 56-story building. Spanning 34 square meters, this thoughtfully designed flat comes fully furnished, ensuring you can move in and start enjoying your new home right away. Imagine waking up to panoramic vistas of the vibrant cityscape or unwinding in your stylish living space after a day at the beach. Scheduled for completion in 2028, the Copacabana Coral Reef is set to become one of Pattaya's most sought-after addresses, blending modern elegance with the tranquility of the Jomtien district. With an asking pri...

฿ 4,600,000

UNIT PARAMETERS:

| | |
|--------------------|------------------|
| UID | FS-240455 |
| quota | foreign quota |
| type | 1 bedroom |
| size | 34m ² |
| floor | 38 |
| view | sea view |
| quality | not chosen |
| transfer cost | |
| transfer fee payer | On buyer |
| additional cost | |

PROJECT PARAMETERS:

| | |
|-----------------------|---------|
| district | Jomtien |
| buildings | 1 |
| floors | 56 |
| start of construction | 2024 |
| built in | 2028 |

FACILITIES:

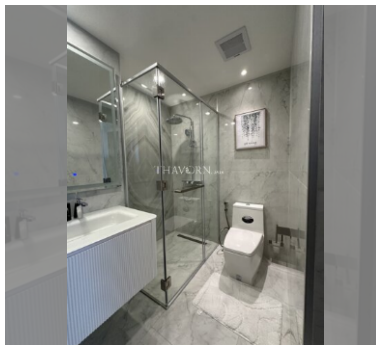
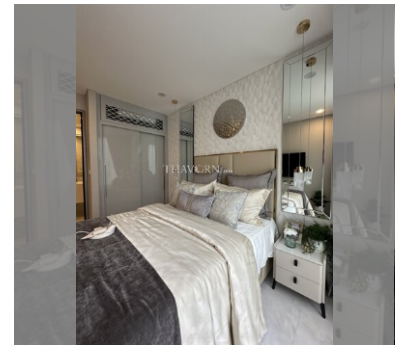
General information: highrise, meters to beach: 500, minutes to beach: 5, multy-level parking.

Swimming pool: swimming pool, kids pool, rooftop pool, infinity view.

Chill zone: chill zone.

Health zone: gym, sauna.

Other: reception, lobby, CCTV, security.



details

