

Condo for sale 1 bedroom 78 m² in View Talay 2, Pattaya

Discover the perfect blend of comfort and style in this stunning 1-bedroom apartment located in the prestigious View Talay 2 condominium in the vibrant city of Pattaya. Situated in the sought-after Jomtien district, this fully furnished flat offers an impressive 78 square meters of living space, providing ample room to relax and entertain. Perched on the 12th floor, this residence boasts breathtaking views and a serene atmosphere, making it an ideal retreat from the bustling city life. The apartment is part of a well-maintained complex, known for its top-notch amenities and convenient location. Priced at 3,690,000 and available under a foreign quota, this property is a fantastic opportunity for those looking to invest in a home away fr...

฿ 3,690,000

UNIT PARAMETERS:

UID	FS-240433
quota	foreign quota
type	1 bedroom
size	78m ²
floor	12
view	sea view
quality	not chosen
transfer cost	
transfer fee payer	Seller 50/ Buyer 50
additional cost	

PROJECT PARAMETERS:

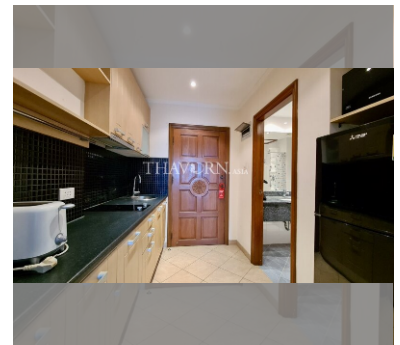
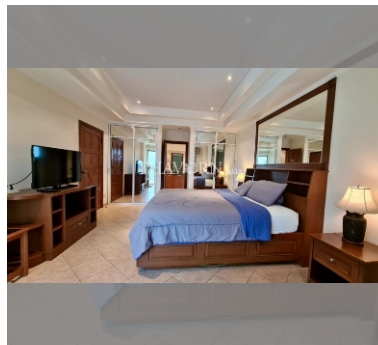
district	Jomtien
buildings	2
built in	2002

FACILITIES:

General information: highrise, open parking, covered parking.

Swimming pool: swimming pool, kids pool.

Other: lobby, CCTV, security, minimart, laundry, room service.



details

