

Condo for sale 1 bedroom 36 m² in Park Lane Jomtien Resort, Pattaya

Discover the perfect blend of comfort and convenience with this charming 1-bedroom apartment nestled in the heart of Jomtien. Located within the prestigious Park Lane Jomtien Resort, this fully furnished flat offers a cozy 36 m² of living space, making it an ideal choice for those seeking a tranquil retreat in vibrant Pattaya. Situated on the 4th floor of an 8-story building, this apartment provides a serene escape with all the modern amenities you desire. With foreign ownership available, it's a fantastic investment opportunity at an attractive price of 1,590,000. Don't miss the chance to own a piece of paradise in one of Pattaya's most sought-after locations!

฿ 1,590,000

UNIT PARAMETERS:

UID	FS-240432
quota	foreign quota
type	1 bedroom
size	36m ²
floor	4
view	city view
quality	excellent
equipment	furniture, kitchen appliances
online viewing	on
transfer cost	
transfer fee payer	50/50
additional cost	
exclusive	on

PROJECT PARAMETERS:

district	Jomtien
buildings	4
floors	8
built in	2010

FACILITIES:

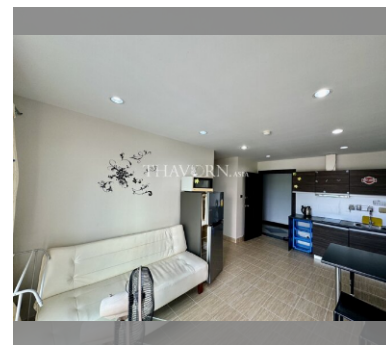
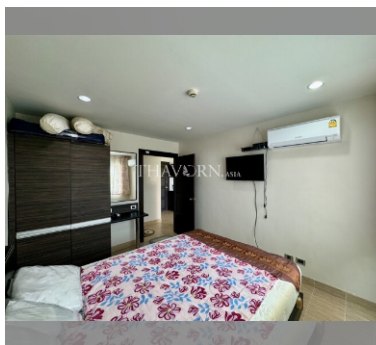
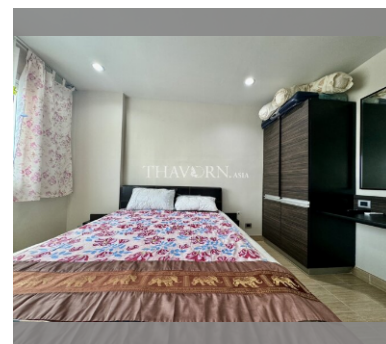
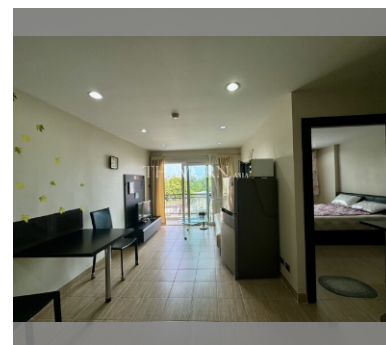
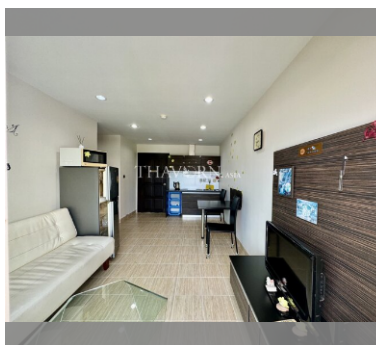
General information: resort, meters to beach: 500, minutes to beach: 10, open parking.

Swimming pool: swimming pool, kids pool, jacuzzi.

Chill zone: chill zone, garden.

Health zone: gym.

Other: CCTV, security, minimart.



details

