

Condo for sale 1 bedroom 90 m² in View Talay Residence 3, Pattaya

Welcome to your dream retreat in the heart of Pattaya! Nestled in the vibrant Jomtien district, this stunning one-bedroom apartment in the prestigious View Talay Residence 3 offers the perfect blend of comfort and style. Spanning an impressive 90 square meters, this fully furnished haven is designed for those who appreciate the finer things in life. Situated on the 2nd floor of a 7-story building, the apartment promises a tranquil escape with ample space to unwind and enjoy. Priced at just 3,200,000, this property presents an exceptional opportunity for savvy investors or anyone looking to own a slice of paradise. With company ownership, the process is seamless and straightforward, ensuring peace of mind. Whether you're lounging in the...

฿ 3,200,000

UNIT PARAMETERS:

UID	FS-240431
quota	company ownership
type	1 bedroom
size	90m ²
floor	2
view	city view
quality	not chosen
transfer cost	
transfer fee payer	
additional cost	

PROJECT PARAMETERS:

district	Jomtien
buildings	1
floors	7
built in	2008

FACILITIES:

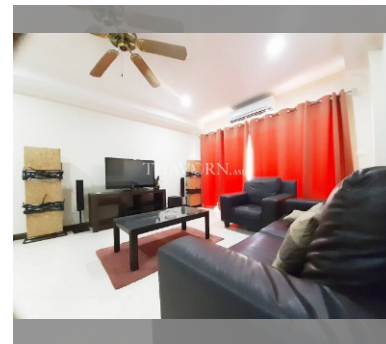
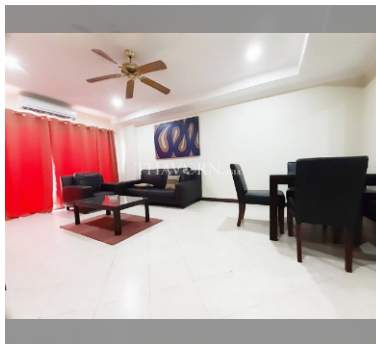
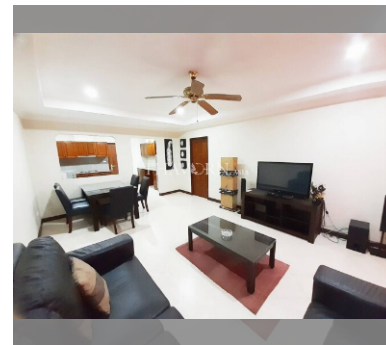
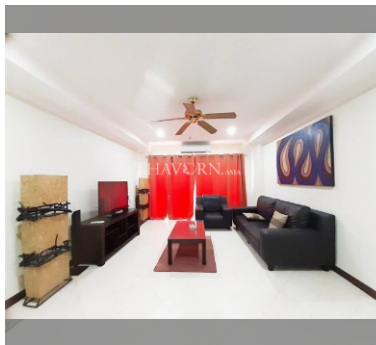
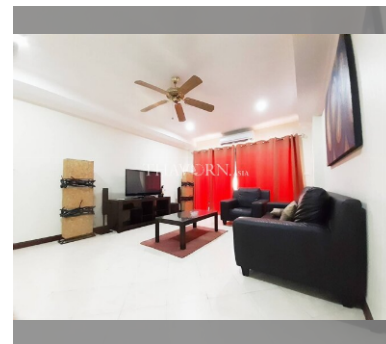
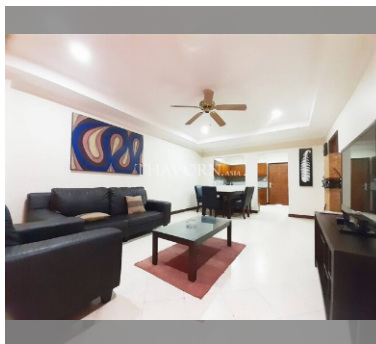
General information: lowrise, covered parking.

Swimming pool: swimming pool.

Chill zone: garden.

Health zone: gym.

Other: CCTV, security.



details

