

Condo for sale 2 bedroom 98 m<sup>2</sup> in The Palm Wongamat, Pattaya

Discover the epitome of luxury living with this stunning 2-bedroom apartment in the prestigious The Palm Wongamat residential complex in Pattaya. Nestled in the vibrant Wongamat area, this exquisite flat offers a perfect blend of comfort and style, ensuring an unparalleled living experience. Spanning an impressive 98 square meters, this fully furnished apartment is situated on the 16th floor of a magnificent 46-story building, providing breathtaking views and an abundance of natural light. Every corner of this home is meticulously designed to offer both functionality and elegance, making it an ideal retreat for those who appreciate the finer things in life. Priced at 22,090,000, this property is available under the Thai quota, ensuring a...

**฿ 22,090,000**

**UNIT PARAMETERS:**

UID	FS-240426
quota	thai quota
type	2 bedroom
size	98m <sup>2</sup>
floor	16
view	sea view
quality	not chosen
transfer cost	
transfer fee payer	Seller 50/ Buyer 50
additional cost	

**PROJECT PARAMETERS:**

district	Wongamat
buildings	2
floors	46
built in	2014
maintenance	฿ 47,040/year

**FACILITIES:**

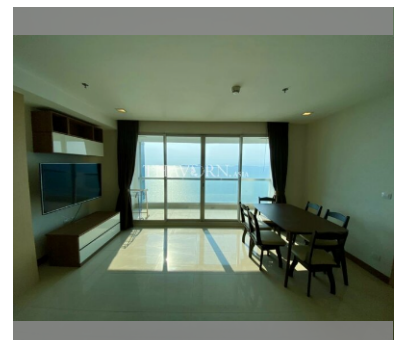
**General information:** highrise, meters to beach: 50, minutes to beach: 1, open parking, multy-level parking, covered parking.

**Swimming pool:** swimming pool, kids pool, infinity view, water slides, waterfall, jacuzzi, pool bar .

**Chill zone:** chill zone, garden.

**Health zone:** gym, sauna, hamam.

**Other:** lobby, meeting room, games room, kids playgarden, CCTV, security.



details

