

Condo for sale studio 37 m<sup>2</sup> in View Talay 2, Pattaya

Welcome to your dream studio apartment in the heart of Pattaya! Nestled in the popular View Talay 2 complex, this fully furnished gem offers 37 square meters of modern living space. Situated on the 11th floor, you'll enjoy breathtaking views and a serene atmosphere, perfect for unwinding after a busy day. Located in the vibrant Jomtien area, this property is ideal for those who crave convenience and excitement. With a foreign ownership quota available, it's a fantastic opportunity for international buyers looking to invest in a thriving community. Priced at just 2,350,000, this stylish studio is a great value for anyone seeking a cozy, well-appointed home in one of Pattaya's most sought-after locations. Don't miss your chance to experien...

## ฿ 2,350,000

### UNIT PARAMETERS:

UID	FS-240400
quota	foreign quota
type	studio
size	37m <sup>2</sup>
floor	11
view	sea view
quality	excellent
equipment	furniture
online viewing	on
transfer cost	
transfer fee payer	50/50
additional cost	

### PROJECT PARAMETERS:

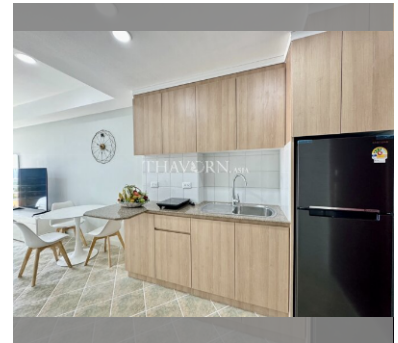
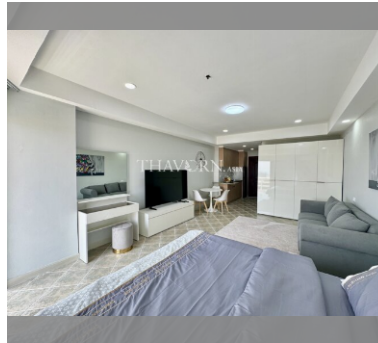
district	Jomtien
buildings	2
built in	2002

### FACILITIES:

**General information:** highrise, open parking, covered parking.

**Swimming pool:** swimming pool, kids pool.

**Other:** lobby, CCTV, security, minimart, laundry, room service.



details

