

Condo for sale 2 bedroom 47 m² in Aeras, Pattaya

Welcome to your dream home in the sky! Nestled in the heart of Pattaya's vibrant Jomtien district, this stunning 2-bedroom apartment in the prestigious Aeras condominium offers an unparalleled living experience. Perched high on the 34th floor of a 38-story masterpiece, this 47 m² haven boasts breathtaking views and modern comforts. Step inside to discover a fully furnished space that blends style and functionality, perfect for those seeking a move-in ready home. The thoughtful layout maximizes every square meter, offering cozy yet spacious living areas that cater to your lifestyle needs. Whether you're entertaining guests or enjoying a quiet night in, this apartment provides the ideal backdrop. Ownership is hassle-free with a Thai quota, ...

฿ 6,460,000

UNIT PARAMETERS:

UID	FS-240380
quota	thai quota
type	2 bedroom
size	47m ²
floor	34
view	sea view
quality	not chosen
transfer cost	
transfer fee payer	Seller 50/ Buyer 50
additional cost	

PROJECT PARAMETERS:

district	Jomtien
buildings	2
floors	38
built in	2017
maintenance	฿ 22,560/year

FACILITIES:

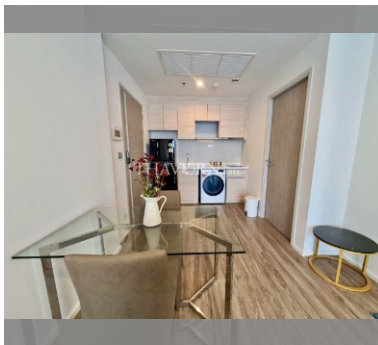
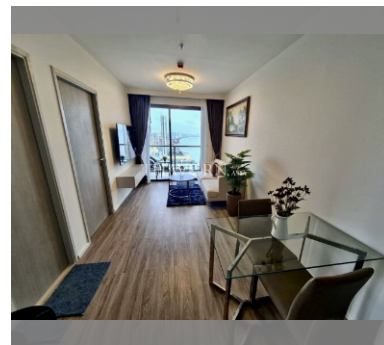
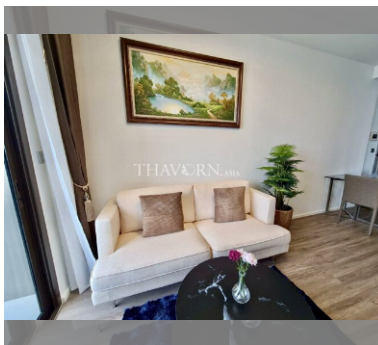
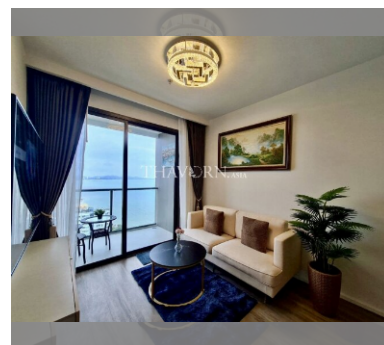
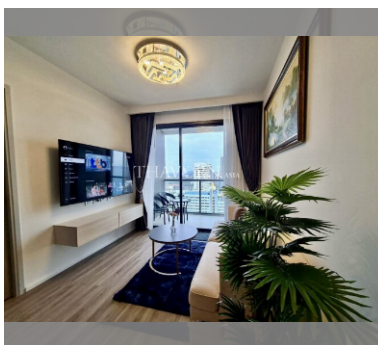
General information: highrise, underground parking.

Swimming pool: swimming pool, rooftop pool.

Chill zone: chill zone, garden, rooftop chillout.

Health zone: gym.

Other: lobby, clubhouse, games room, kids playgarden, CCTV, security, minimart.



details

