

Condo for sale 1 bedroom 84 m<sup>2</sup> in View Talay 2, Pattaya

Welcome to your dream home in the heart of Pattaya! This stunning 1-bedroom apartment in the sought-after View Talay 2 complex offers a luxurious living experience with breathtaking views from the 11th floor. Spanning an impressive 84 square meters, this fully furnished gem is ready for you to move in and start living the high life. Located in the vibrant Jomtien area, you'll be surrounded by all the amenities and excitement that Pattaya has to offer. Whether you're looking to relax by the beach, explore local markets, or enjoy the nightlife, everything is just a stone's throw away. Priced at 3,800,000, this property is not only a fantastic place to live but also a smart investment. With company ownership, the process is smooth and hassl...

## ฿ 3,800,000

### UNIT PARAMETERS:

UID	FS-240365
quota	company ownership
type	1 bedroom
size	84m <sup>2</sup>
floor	11
view	city view
quality	not chosen
transfer cost	
transfer fee payer	transfer on seller
additional cost	

### PROJECT PARAMETERS:

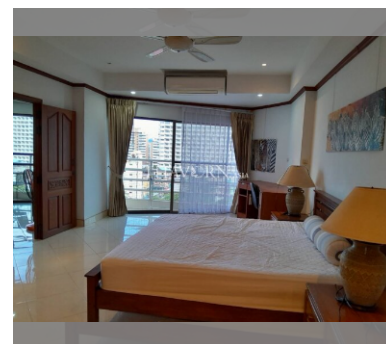
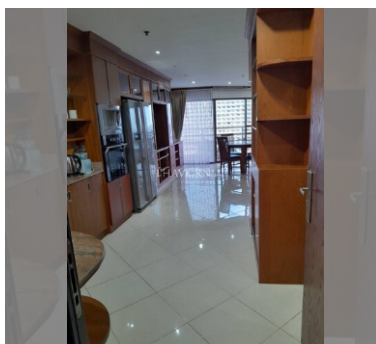
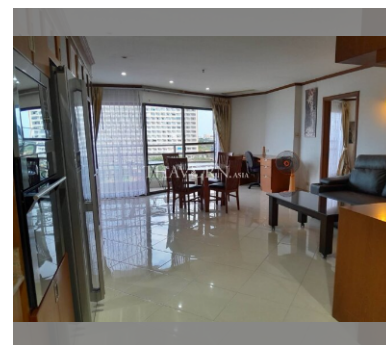
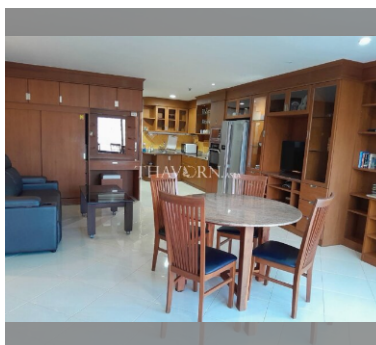
district	Jomtien
buildings	2
built in	2002

### FACILITIES:

**General information:** highrise, open parking, covered parking.

**Swimming pool:** swimming pool, kids pool.

**Other:** lobby, CCTV, security, minimart, laundry, room service.



details

