

Condo for sale 1 bedroom 36.44 m² in Atlantis Condo Resort, Pattaya

Welcome to your dream escape in the heart of Pattaya! This charming 1-bedroom apartment, nestled within the vibrant Atlantis Condo Resort, offers the perfect blend of comfort and convenience. With a spacious 36.44 square meters of fully furnished living space, you'll feel right at home from the moment you step inside. Located on the 4th floor of an 8-story building, this delightful flat provides a serene retreat while being just moments away from the lively Jomtien district. Imagine waking up every day in a resort-style setting, where every detail has been thoughtfully designed for your comfort. Priced at an attractive 1,850,000, this property is not just a home, but an excellent investment opportunity under Thai ownership. Whether you'r...

฿ 1,850,000

UNIT PARAMETERS:

UID	FS-240360
quota	thai quota
type	1 bedroom
size	36.44m ²
floor	4
view	city view
quality	excellent
equipment	furniture, kitchen appliances
online viewing	on
transfer cost	87000
transfer fee payer	50/50
additional cost	

PROJECT PARAMETERS:

district	Jomtien
buildings	5
floors	8
built in	2014
maintenance	฿ 15,305/year

FACILITIES:

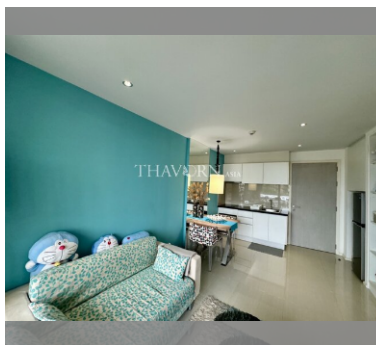
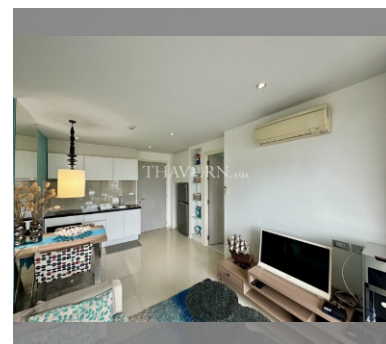
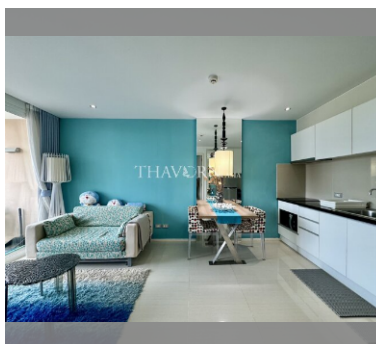
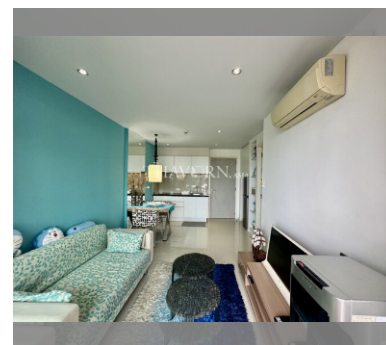
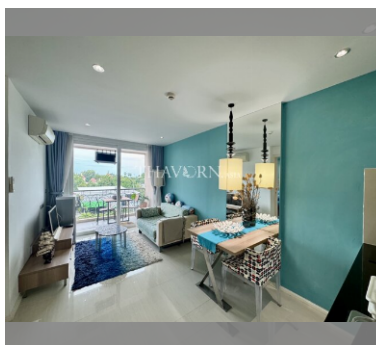
General information: resort, meters to beach: 500, minutes to beach: 5, open parking, covered parking.

Swimming pool: swimming pool, kids pool, water slides, waterfall, jacuzzi.

Chill zone: chill zone, garden.

Health zone: gym, sauna, hamam.

Other: reception, lobby, clubhouse, games room, kids playgarden, CCTV, security, minimart, laundry.



details

