

Condo for sale 1 bedroom 28.87 m² in Neo Sea View, Pattaya

Discover your perfect seaside retreat with this charming 1-bedroom apartment in the Neo Sea View condominium complex, located in the vibrant city of Pattaya, specifically in the serene Na Jomtien area. Priced attractively at just 1,690,000, this cozy flat offers a comfortable living space of 28.87 square meters. Situated on the 3rd floor of an 8-story building, this fully furnished apartment is ready for you to move in and start enjoying the coastal lifestyle. Whether you're looking for a permanent residence, a holiday home, or an investment opportunity, this property is a fantastic choice, especially with its foreign ownership quota. Embrace the convenience and comfort of living in the Neo Sea View, where you can enjoy the best of Patta...

฿ 1,690,000

UNIT PARAMETERS:

UID	FS-240347
quota	foreign quota
type	1 bedroom
size	28.87m ²
floor	3
view	city view
quality	not chosen
transfer cost	
transfer fee payer	Seller 50/ Buyer 50
additional cost	

PROJECT PARAMETERS:

district	Na Jomtien
buildings	4
floors	8
built in	2014

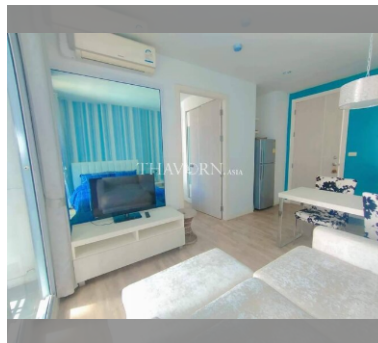
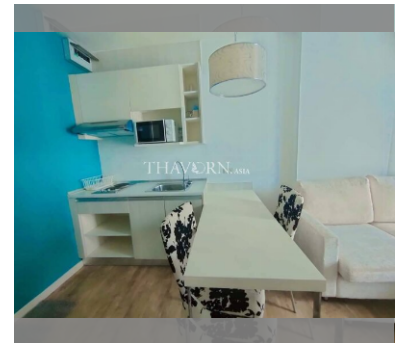
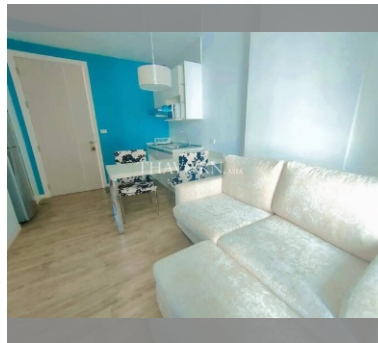
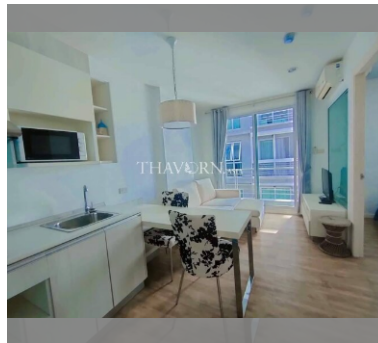
FACILITIES:

General information: boutique, meters to beach: 50, minutes to beach: 1, shuttle bus, covered parking.

Swimming pool: rooftop pool, sunbathing area.

Health zone: gym.

Other: reception, CCTV, security, room service.



details

