

Condo for sale 1 bedroom 36 m<sup>2</sup> in Treetops Pattaya, Pattaya

Welcome to your dream home in the heart of Pattaya! This charming 1-bedroom flat in the prestigious Treetops Pattaya condominium is perfect for those seeking a blend of comfort and convenience. Nestled in the vibrant Thappraya district, this fully furnished gem offers 36 square meters of thoughtfully designed living space. Located on the 9th floor of a 12-story building, you'll enjoy stunning views and a serene atmosphere high above the bustling city. Priced at just 2,550,000, this property is an incredible investment in one of Pattaya's most sought-after locations. With Thai quota ownership, this is a fantastic opportunity for both locals and expatriates. Don't miss out on making this stylish, move-in-ready flat your new home. Schedul...

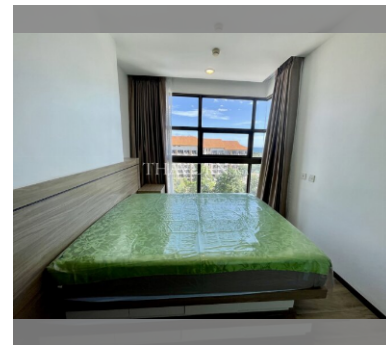
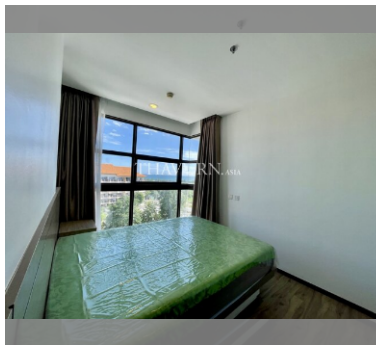
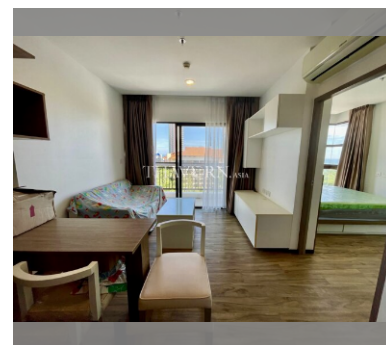
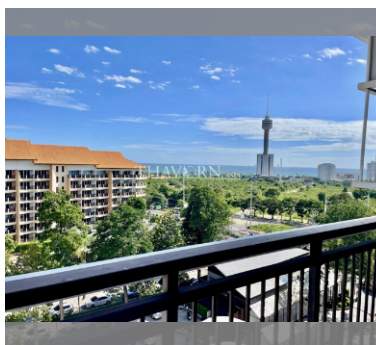
## ฿ 2,550,000

### UNIT PARAMETERS:

UID	FS-240336
quota	thai quota
type	1 bedroom
size	36m <sup>2</sup>
floor	9
view	sea view
quality	not chosen
transfer cost	
transfer fee payer	Seller 50 / Buyer 50
additional cost	

### PROJECT PARAMETERS:

district	Thappraya
buildings	1
floors	12
built in	2015
maintenance	฿ 17,280/year



details

