

Condo for sale studio 32 m² in View Talay 1, Pattaya

Welcome to your dream studio apartment in the heart of Pattaya! Nestled in the sought-after Pratumnak area, this fully furnished gem in View Talay 1 offers you a cozy 32 m² of modern living space. Perched on the 6th floor of a 15-story building, this charming flat provides you with stunning views and a serene atmosphere. Whether you're looking for a holiday retreat or a permanent residence, this studio is perfect for you. Priced at just 1,100,000, this property is an incredible investment opportunity. With Thai ownership quota, you can enjoy the benefits of owning a piece of paradise in one of Pattaya's most desirable locations. Don't miss out on this fantastic opportunity to own a stylish and comfortable studio in View Talay 1. Your...

฿ 1,100,000

UNIT PARAMETERS:

UID	FS-240299
quota	thai quota
type	studio
size	32m ²
floor	6
view	city view
quality	not chosen
transfer cost	
transfer fee payer	Seller 50/ Buyer 50
additional cost	

PROJECT PARAMETERS:

district	Pratumnak
buildings	2
floors	15
built in	1997
maintenance	฿ 7,680/year

FACILITIES:

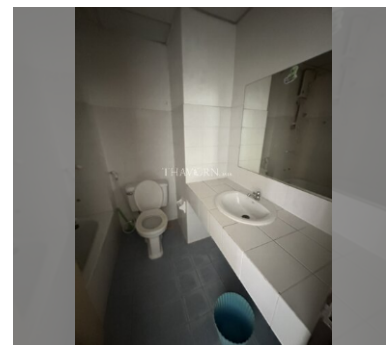
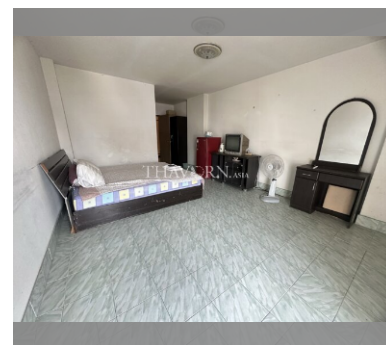
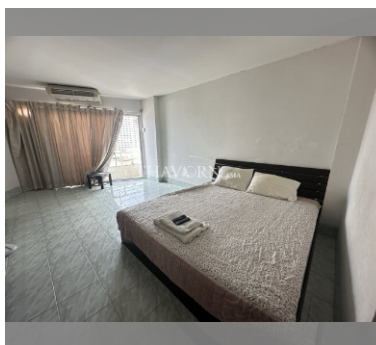
General information: highrise, meters to beach: 600, minutes to beach: 10, open parking.

Swimming pool: swimming pool, kids pool.

Chill zone: garden.

Health zone: massage.

Other: lobby, CCTV, security, minimart, laundry, room service.



details

