

Condo for sale 2 bedroom 62 m² in The Chezz, Pattaya

Welcome to your dream retreat in the heart of Pattaya! This stunning 2-bedroom, 62 m² apartment in The Chezz Condominium is now available for just 3,950,000. Nestled in the vibrant Central Pattaya, this top-floor gem offers the perfect blend of comfort and convenience. Step inside to discover a fully furnished living space that exudes modern elegance. Every corner of this 7th-floor apartment has been thoughtfully designed to provide a cozy and luxurious atmosphere. The open-plan layout ensures a seamless flow between the living, dining, and kitchen areas, making it an ideal space for both relaxation and entertaining. Both bedrooms are spacious and filled with natural light, ensuring a restful retreat after a long day. The apartment's ful...

฿ 3,950,000

UNIT PARAMETERS:

UID	FS-240294
quota	foreign quota
type	2 bedroom
size	62m ²
floor	7
view	city view
quality	not chosen
transfer cost	
transfer fee payer	Seller 50/ Buyer 50
additional cost	

PROJECT PARAMETERS:

district	Central Pattaya
buildings	1
floors	7

FACILITIES:

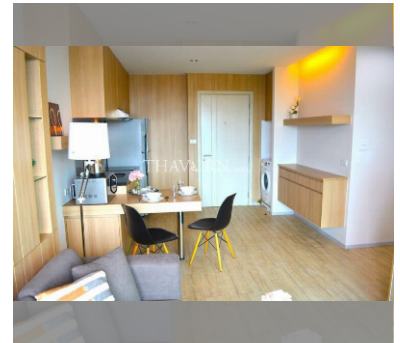
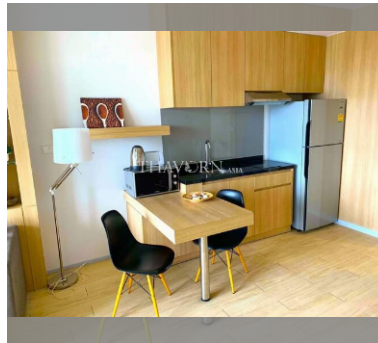
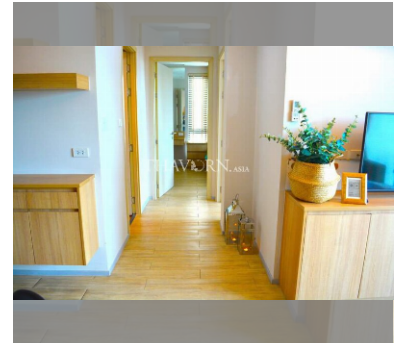
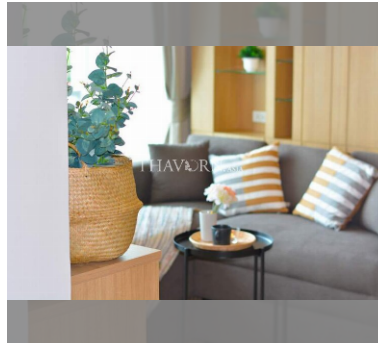
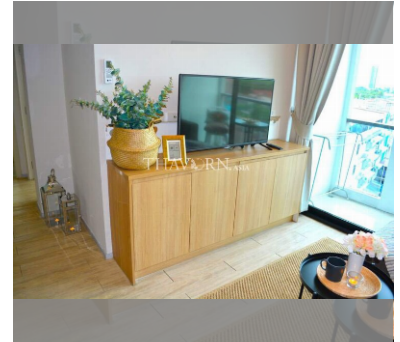
General information: lowrise, open parking.

Swimming pool: swimming pool, rooftop pool.

Chill zone: chill zone, garden, rooftop chillout.

Health zone: gym, sauna.

Other: lobby, CCTV, security.



details

