

Condo for sale 1 bedroom 84 m² in Baan Suan Lalana, Pattaya

Discover the charm of coastal living with this inviting 1-bedroom apartment in the Baan Suan Lalana complex, nestled in the vibrant city of Pattaya, in the Jomtien district. This spacious 84 m² flat is beautifully furnished and ready for you to move in and start enjoying your new home from day one. Situated on the 4th floor of a 5-story building, this apartment offers a perfect blend of comfort and convenience. The full furniture package ensures that all your needs are met, making it an ideal choice for those looking to settle in quickly without the hassle of decorating. Priced at 3,300,000, this property represents excellent value in the sought-after Jomtien area. Plus, with foreign ownership available, it's a fantastic opportunity for ...

฿ 3,300,000

UNIT PARAMETERS:

UID	FS-240291
quota	foreign quota
type	1 bedroom
size	84m ²
floor	4
view	pool view
quality	not chosen
transfer cost	
transfer fee payer	Seller 50/ Buyer 50
additional cost	

PROJECT PARAMETERS:

district	Jomtien
buildings	9
floors	5
built in	1991
maintenance	฿ 20,160/year

FACILITIES:

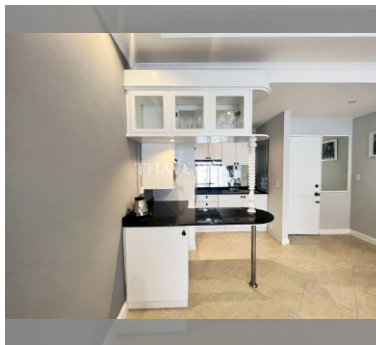
General information: resort, meters to beach: 400, minutes to beach: 8, open parking, covered parking.

Swimming pool: swimming pool, kids pool.

Chill zone: chill zone, garden.

Health zone: gym.

Other: CCTV, security.



details

