

Condo for sale 1 bedroom 100 m<sup>2</sup> in Baan Suan Lalana, Pattaya

Discover the perfect blend of comfort and style in this charming 1-bedroom apartment located in the prestigious Baan Suan Lalana complex in Pattaya's serene Jomtien district. Priced attractively at 3,650,000, this fully furnished gem offers a generous 100 m<sup>2</sup> of living space, giving you plenty of room to relax and unwind. Situated on the 2nd floor of a 5-story building, this apartment is ideal for those seeking a peaceful retreat with all the conveniences of modern living. The full furnishing means you can move in right away and start enjoying your new home without any hassle. Whether you're looking for a permanent residence or a vacation getaway, this property, available under foreign ownership, provides an excellent opportunity. Don't m...

## ฿ 3,650,000

### UNIT PARAMETERS:

UID	FS-240288
quota	foreign quota
type	1 bedroom
size	100m <sup>2</sup>
floor	2
view	garden view
quality	not chosen
transfer cost	
transfer fee payer	Seller 50/ Buyer 50
additional cost	

### PROJECT PARAMETERS:

district	Jomtien
buildings	9
floors	5
built in	1991
maintenance	฿ 24,000/year

### FACILITIES:

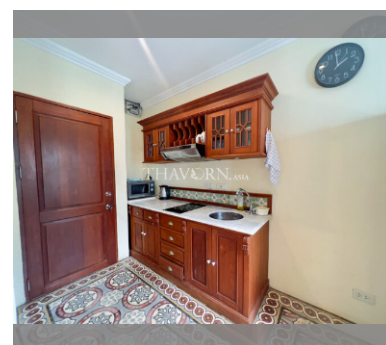
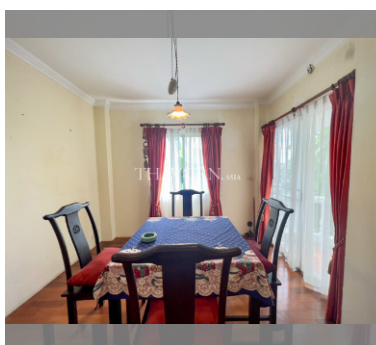
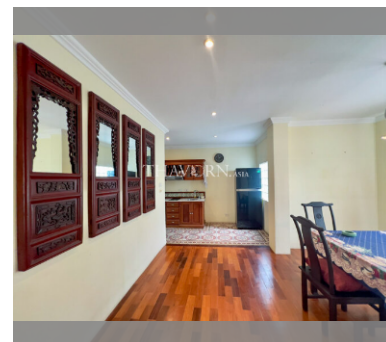
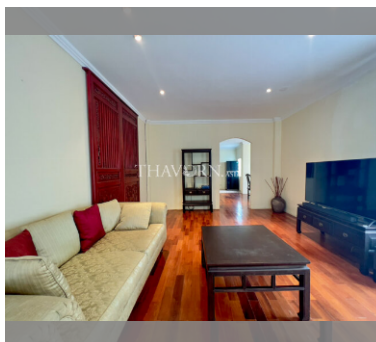
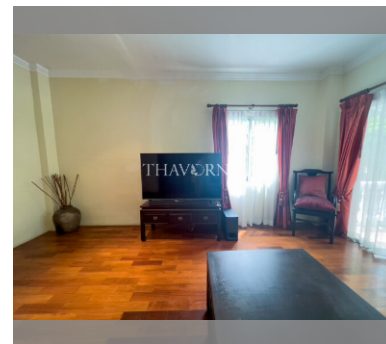
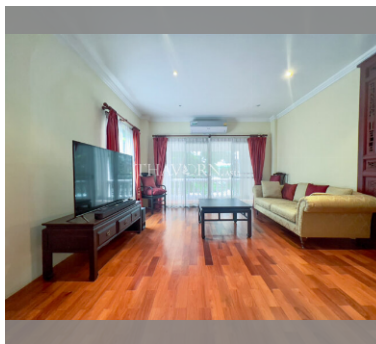
**General information:** resort, meters to beach: 400, minutes to beach: 8, open parking, covered parking.

**Swimming pool:** swimming pool, kids pool.

**Chill zone:** chill zone, garden.

**Health zone:** gym.

**Other:** CCTV, security.



details

