

Condo for sale 1 bedroom 65 m² in Baan Suan Lalana, Pattaya

Discover your perfect retreat in the heart of Jomtien, Pattaya! This charming 1-bedroom flat in the prestigious Baan Suan Lalana complex offers a spacious 65 m² of living space, fully furnished and ready for you to move in. Priced at just 2,850,000, this gem is situated on the 3rd floor of a 5-story building, providing a serene and comfortable living environment. With foreign ownership available, this beautifully appointed property is perfect for those looking to make Pattaya their home. Enjoy the convenience and luxury of living in Baan Suan Lalana, where every detail has been designed with your comfort in mind. Don't miss out on this incredible opportunity to own a piece of paradise in one of Pattaya's most sought-after locations!

฿ 2,850,000

UNIT PARAMETERS:

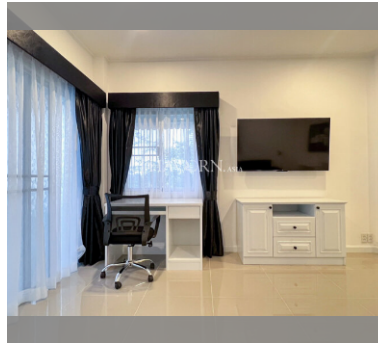
UID	FS-240287
quota	foreign quota
type	1 bedroom
size	65m ²
floor	3
view	city view
quality	not chosen
transfer cost	
transfer fee payer	Seller 50/ Buyer 50
additional cost	

PROJECT PARAMETERS:

district	Jomtien
buildings	9
floors	5
built in	1991
maintenance	฿ 15,600/year

FACILITIES:

- General information:** resort, meters to beach: 400, minutes to beach: 8, open parking, covered parking.
- Swimming pool:** swimming pool, kids pool.
- Chill zone:** chill zone, garden.
- Health zone:** gym.
- Other:** CCTV, security.



[details](#)

