

Condo for sale 2 bedroom 68 m<sup>2</sup> in Apus Pattaya, Pattaya

Discover the perfect blend of comfort and style in this stunning 2-bedroom apartment nestled in the heart of Central Pattaya at the prestigious Apus Condominium. Spanning a generous 68 square meters, this fully furnished gem is ready for you to move in and make it your own. Situated on the 7th floor of an 8-story building, you'll enjoy breathtaking views and a sense of serenity high above the bustling city. The apartment boasts a modern design with high-quality furnishings, ensuring that every corner of your new home exudes elegance and functionality. Priced at 5,999,000, this property offers exceptional value for a prime location in one of Pattaya's most sought-after residential complexes. Whether you're looking to invest or find a cozy...

**฿ 5,999,000**

**UNIT PARAMETERS:**

UID	FS-240261
quota	thai quota
type	2 bedroom
size	68m <sup>2</sup>
floor	7
view	pool view
quality	not chosen
transfer cost	
transfer fee payer	Seller 50/ Buyer 50
additional cost	

**PROJECT PARAMETERS:**

district	Central Pattaya
buildings	2
floors	8
built in	2010
maintenance	฿ 32,640/year

**FACILITIES:**

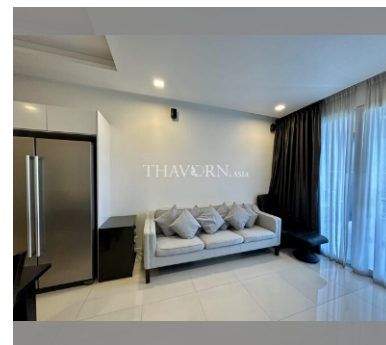
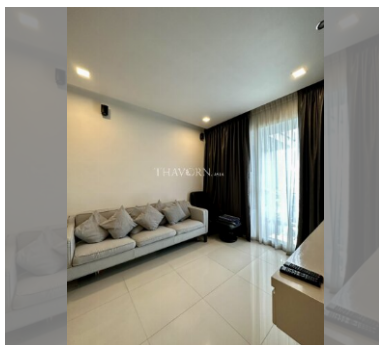
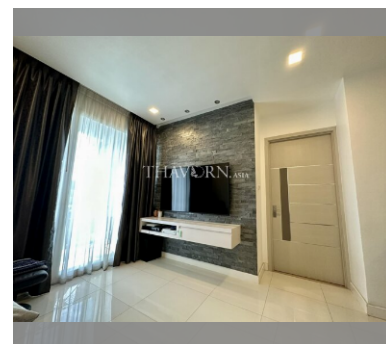
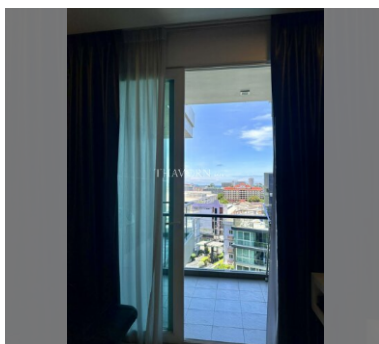
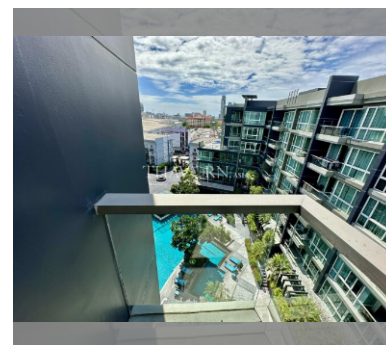
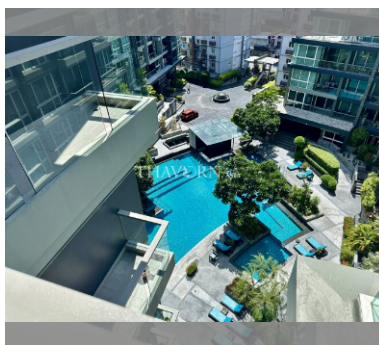
General information: boutique, underground parking.

Swimming pool: swimming pool, kids pool.

Chill zone: chill zone, garden.

Health zone: gym.

Other: reception, lobby, CCTV, security, minimart, room service.



[details](#)

