

Condo for sale 2 bedroom 82 m² in The Palm Wongamat, Pattaya

Discover the epitome of luxury living with this stunning 2-bedroom apartment in The Palm Wongamat, Pattaya! Nestled in the prestigious Wongamat area, this exquisite flat offers 82 square meters of beautifully furnished space, ensuring you can move in effortlessly and start enjoying your new home right away. Perched on the 10th floor of a 46-story building, you'll be treated to breathtaking views and a serene atmosphere. This property is perfect for those looking to invest or settle in one of Pattaya's most sought-after locations. With a price tag of 17,200,000, this apartment is a fantastic opportunity for foreign buyers, as it comes with an international ownership quota. Don't miss out on the chance to own a piece of paradise in The Pal...

฿ 17,200,000

UNIT PARAMETERS:

UID	FS-240233
quota	foreign quota
type	2 bedroom
size	82m ²
floor	10
view	sea view
quality	not chosen
transfer cost	
transfer fee payer	Seller 50/ Buyer 50
additional cost	

PROJECT PARAMETERS:

district	Wongamat
buildings	2
floors	46
built in	2014
maintenance	฿ 39,360/year

FACILITIES:

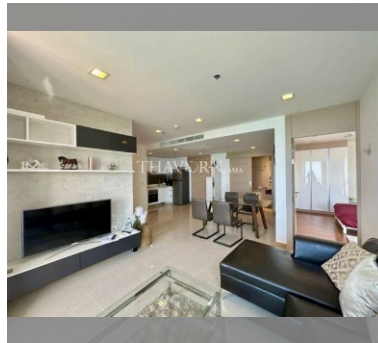
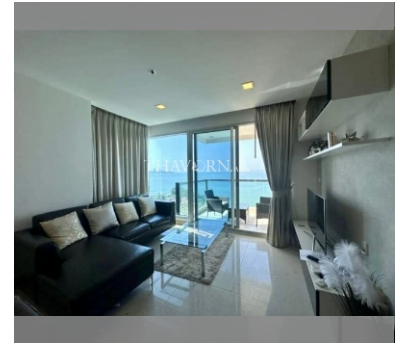
General information: highrise, meters to beach: 50, minutes to beach: 1, open parking, multy-level parking, covered parking.

Swimming pool: swimming pool, kids pool, infinity view, water slides, waterfall, jacuzzi, pool bar .

Chill zone: chill zone, garden.

Health zone: gym, sauna, hamam.

Other: lobby, meeting room, games room, kids playgarden, CCTV, security.



details

