

Condo for sale 1 bedroom 28 m² in Neo Sea View, Pattaya

Discover your dream home in the heart of Pattaya with this charming 1-bedroom apartment in the Neo Sea View condominium. Nestled in the serene Najomtien district, this fully furnished gem offers 28 square meters of cozy living space, perfect for singles or couples seeking a tranquil retreat. Situated on the 6th floor of an 8-story building, this delightful flat boasts modern amenities and stylish decor, ensuring you feel right at home from the moment you step inside. Whether you're looking for a permanent residence or a holiday getaway, this apartment caters to your every need. Priced at just 1,840,000, this property offers exceptional value in a highly sought-after location. Plus, with foreign ownership available, it's an excellent inve...

฿ 1,840,000

UNIT PARAMETERS:

UID	FS-240229
quota	foreign quota
type	1 bedroom
size	28m ²
floor	6
view	sea view
quality	not chosen
transfer cost	
transfer fee payer	Seller 50/ Buyer 50
additional cost	

PROJECT PARAMETERS:

district	Na Jomtien
buildings	4
floors	8
built in	2014

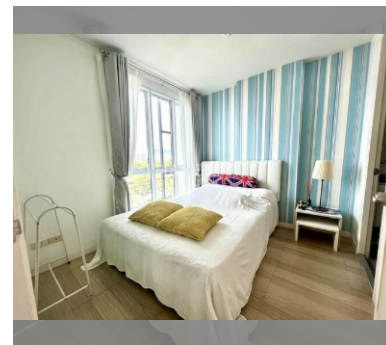
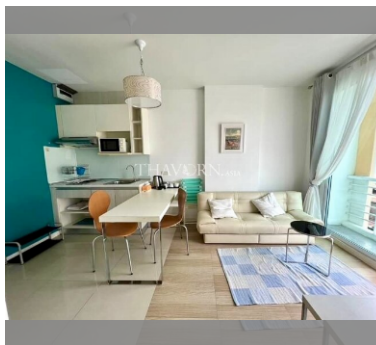
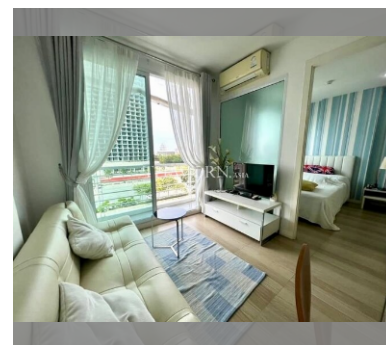
FACILITIES:

General information: boutique, meters to beach: 50, minutes to beach: 1, shuttle bus, covered parking.

Swimming pool: rooftop pool, sunbathing area.

Health zone: gym.

Other: reception, CCTV, security, room service.



details

