

Condo for sale 1 bedroom 28 m² in Neo Sea View, Pattaya

Discover your perfect getaway in the heart of Pattaya with this charming 1-bedroom flat at the Park Lane Jomtien Resort! Nestled in the vibrant Jomtien district, this cozy 28 m² apartment offers a delightful blend of comfort and convenience. Situated on the 4th floor of an 8-story building, this fully furnished gem is ready for you to move in and start enjoying the serene resort lifestyle. With a price tag of just ฿1,600,000, it's an incredible opportunity to own a piece of paradise under Thai quota ownership. Imagine waking up to the tranquil ambiance of Park Lane Jomtien Resort, where every day feels like a vacation. Whether you're looking for a permanent residence or a holiday retreat, this well-appointed flat has everything you need t...

฿ 1,600,000

UNIT PARAMETERS:

UID	FS-240222
quota	thai quota
type	1 bedroom
size	28m ²
floor	4
view	partial sea view
quality	excellent
equipment	furniture, kitchen appliances
transfer cost	
transfer fee payer	50/50
additional cost	

PROJECT PARAMETERS:

district	Na Jomtien
buildings	4
floors	8
built in	2014

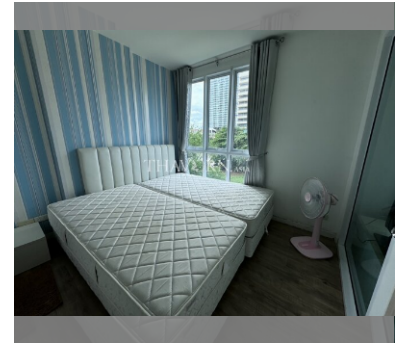
FACILITIES:

General information: boutique, meters to beach: 50, minutes to beach: 1, shuttle bus, covered parking.

Swimming pool: rooftop pool, sunbathing area.

Health zone: gym.

Other: reception, CCTV, security, room service.



details

