

Condo for sale 2 bedroom 47.66 m² in Aeras, Pattaya

Discover the perfect blend of comfort and style in this stunning 1-bedroom apartment located in the prestigious Aeras Condominium in Pattaya's vibrant Jomtien district. This beautifully fully-furnished flat spans 47.66 square meters and is situated on the 6th floor of a modern 38-story building, offering you a serene living space with a touch of luxury. Priced at ฿5,500,000, this property is an excellent investment opportunity or a dream home for those seeking a sophisticated urban lifestyle. The apartment is under Thai quota ownership, making it an attractive option for local buyers. Whether you're enjoying the thoughtfully designed interiors or exploring the lively surroundings of Jomtien, this apartment in Aeras Condominium promises a ...

฿ 5,500,000

UNIT PARAMETERS:

UID	FS-240221
quota	thai quota
type	2 bedroom
size	47.66m ²
floor	6
view	sea view
quality	excellent
equipment	furniture, kitchen appliances
online viewing	on
transfer cost	
transfer fee payer	50/50
additional cost	

PROJECT PARAMETERS:

district	Jomtien
buildings	2
floors	38
built in	2017
maintenance	฿ 22,877/year

FACILITIES:

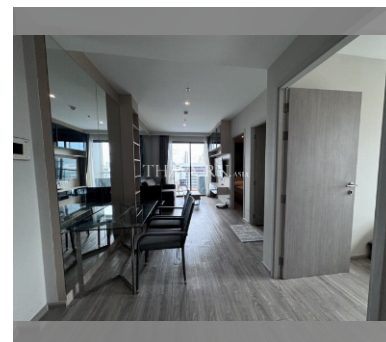
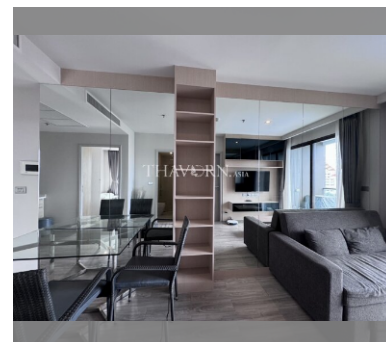
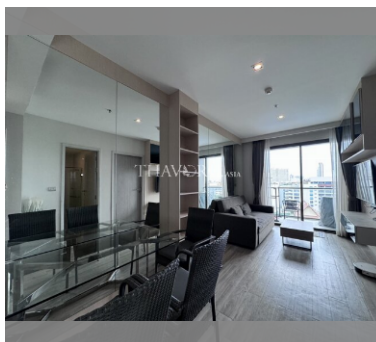
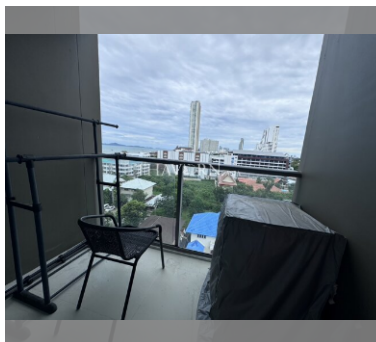
General information: highrise, underground parking.

Swimming pool: swimming pool, rooftop pool.

Chill zone: chill zone, garden, rooftop chillout.

Health zone: gym.

Other: lobby, clubhouse, games room, kids playgarden, CCTV, security, minimart.



details

