

Condo for sale 3 bedroom 167 m<sup>2</sup> in Leela Paradise Residence, Pattaya

## ฿ 8,900,000

### UNIT PARAMETERS:

UID	FS-240157
quota	foreign quota
type	3 bedroom
size	167m <sup>2</sup>
floor	5-6
view	pool access
quality	not chosen

### PROJECT PARAMETERS:

district	Jomtien
buildings	1
floors	6
built in	2008
maintenance	฿ 70,140/year

### FACILITIES:

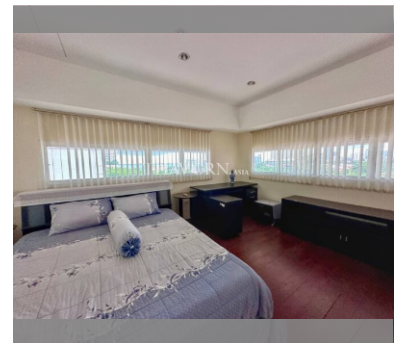
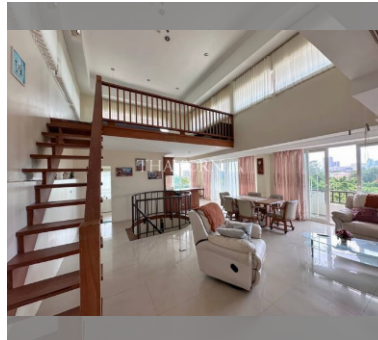
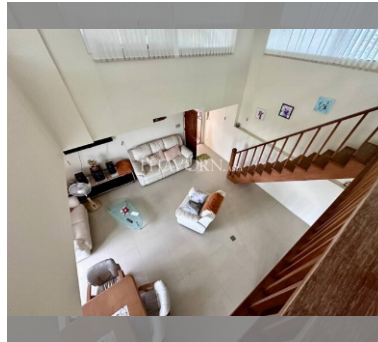
General information: lowrise, meters to beach: 350, minutes to beach: 3, open parking.

Swimming pool: swimming pool.

Chill zone: garden.

Health zone: gym.

Other: CCTV, security.



[details](#)

