

Condo for sale 1 bedroom 35 m² in Paradise Park, Pattaya

Discover your own piece of paradise with this charming 1-bedroom condo in the esteemed Paradise Park complex, located in the vibrant Jomtien area of Pattaya. Priced at an attractive 1,890,000, this cozy 35 m² flat offers a perfect blend of comfort and convenience. Situated on the 7th floor of an 8-story building, this fully furnished condo is ready for you to move in and start enjoying the tropical lifestyle. The Paradise Park complex is known for its serene ambiance and well-maintained facilities, making it a sought-after residence in the heart of Pattaya. With foreign ownership quota available, this property is an excellent investment opportunity for international buyers. Don't miss your chance to own a slice of paradise in one of Patt...

฿ 1,890,000

UNIT PARAMETERS:

UID	FS-240129
quota	foreign quota
type	1 bedroom
size	35m ²
floor	7
view	pool view
quality	good
transfer cost	
transfer fee payer	Seller50/Buyer50
additional cost	

PROJECT PARAMETERS:

district	Jomtien
buildings	3
floors	8
built in	2012
maintenance	฿ 14,700/year

FACILITIES:

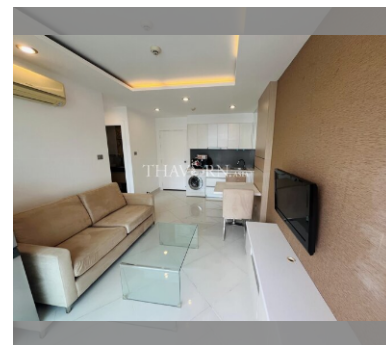
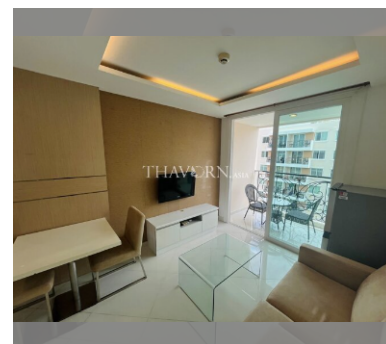
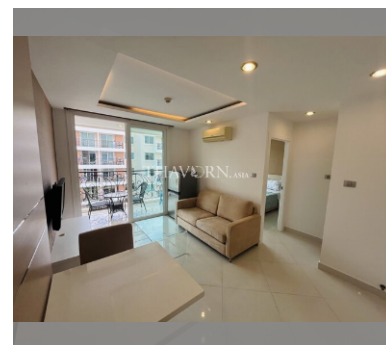
General information: resort, underground parking.

Swimming pool: swimming pool, kids pool.

Chill zone: chill zone, garden.

Health zone: gym.

Other: lobby, kids playgarden, CCTV, security, minimart.



details

