

Condo for sale studio 29 m<sup>2</sup> in View Talay 1, Pattaya

Discover your perfect getaway in the heart of Pattaya! This charming studio condo, nestled in the prestigious View Talay 1 complex, offers 29 square meters of fully furnished comfort. Priced at just ฿1,590,000, this gem is located on the 13th floor of a 15-story building, providing stunning views and a serene living experience. Situated in the desirable Pratumnak area, this condo is perfect for those seeking a blend of convenience and tranquility. The foreign ownership quota ensures a smooth and straightforward purchasing process for international buyers. Don't miss out on this incredible opportunity to own a piece of paradise in Pattaya. Your dream home awaits at View Talay 1!

## ฿ 1,590,000

### UNIT PARAMETERS:

UID	FS-240121
quota	foreign quota
type	studio
size	29m <sup>2</sup>
floor	13
view	sea view
quality	not chosen
transfer cost	
transfer fee payer	Seller50/ buyer50
additional cost	

### PROJECT PARAMETERS:

district	Pratumnak
buildings	2
floors	15
built in	1997
maintenance	฿ 6,960/year

### FACILITIES:

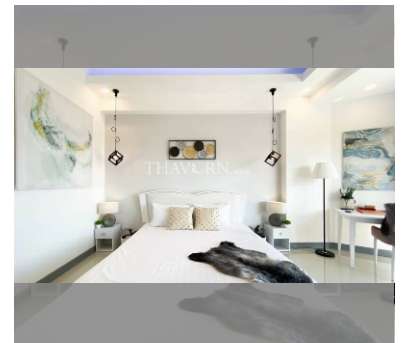
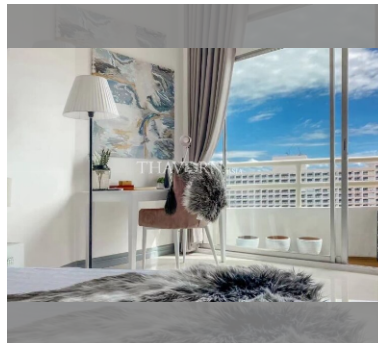
**General information:** highrise, meters to beach: 600, minutes to beach: 10, open parking.

**Swimming pool:** swimming pool, kids pool.

**Chill zone:** garden.

**Health zone:** massage.

**Other:** lobby, CCTV, security, minimart, laundry, room service.



details

