

Condo for sale 1 bedroom 29 m² in Copacabana Beach Jomtien, Pattaya

Welcome to your dream home at Copacabana Beach Jomtien in the vibrant city of Pattaya! This stunning 1-bedroom flat, nestled on the 26th floor of a modern 59-story high-rise, offers a cozy 29 square meters of fully furnished living space. Imagine waking up to breathtaking views every morning and enjoying the luxury of a new development in one of Pattaya's most sought-after neighborhoods. Priced at 4,620,000, this gem is perfect for those seeking a stylish and convenient lifestyle. Located in the lively Jomtien area, you'll be just steps away from the beautiful Copacabana Beach, where you can soak up the sun and enjoy the serene sea breeze. Whether you're looking for a holiday retreat or a permanent residence, this flat is ready to welco...

฿ 4,620,000

UNIT PARAMETERS:

UID	FS-240035
quota	foreign quota
type	1 bedroom
size	29m ²
floor	26
view	sea view
quality	not chosen
transfer cost	
transfer fee payer	Seller 50/Buyer 50
additional cost	

PROJECT PARAMETERS:

district	Jomtien
buildings	1
floors	59
built in	2022
maintenance	฿ 17,400/year

FACILITIES:

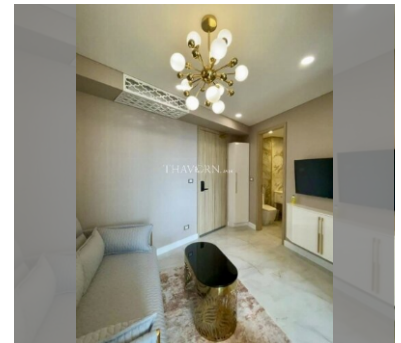
General information: highrise, meters to beach: 50, minutes to beach: 1, shuttle bus, pets are allowed, open parking, multy-level parking.

Swimming pool: swimming pool, rooftop pool, infinity view, jacuzzi, pool bar , sunbathing area.

Chill zone: chill zone, garden, rooftop chillout.

Health zone: gym, sauna, hamam.

Other: lobby, meeting room, games room, kids playgarden, CCTV, security.



details

